

ADDENDUM NUMBER TWO
TO
REQUEST FOR BIDS, CONTRACT DOCUMENTS, CONSTRUCTION
SPECIFICATIONS AND DRAWINGS
FOR CONSTRUCTION OF

ROADWAY IMPROVEMENTS FOR HENDLEY ROAD AND MONTEITH ROAD
FOR
THE CITY OF PORT WENTWORTH

ACKNOWLEDGE RECEIPT OF THIS ADDENDUM BY INSERTING ITS NUMBER IN THE PROPOSAL. FAILURE TO DO SO MAY SUBJECT BONA FIDE PROPOSERS TO DISQUALIFICATION. THIS ADDENDUM FORMS A PART OF THE PROJECT DOCUMENTS; IT MODIFIES THEM AS FOLLOWS:

1. Schedule of Items

- a. Replace existing "Roadway Improvements for Hendley Road and Monteith Road Schedule of Items" with the attached "Roadway Improvements for Hendley Road and Monteith Road Schedule of Items" dated March 19, 2019. Noted changes are
 - i. Asphalt Crack repair unit of measure from SY to LF, quantity also increased to reflect measurement in LF.
 - ii. Chip Seal description changed to read "Chip Seal, Single Surface #7, GDOT Section 424.
 - iii. Added "Grade and Install 6" GAB, 90 SY" to bid items for repair of side road at/near STA 24+50 on Monteith Road.
 - iv. Increased Qty of "1.5" 12.5mm Asphalt Superpave Driveway" to cover added driveway repairs.

2. Construction Plans

- a. Replace existing plan sheets C-05 and C-06 with the attached plan sheets C-05 and C06 Revision Date 3/21/2019. Noted changes in the plans is the grading and installation of asphalt driveway at/near STA 24+50 on Monteith Road and the Overlay of driveway at/near STA 41+25 on Monteith Road.

3. Notes of Clarity

- a. Roadway must remain passable at all time.
- b. Contractor is allowed closing of one lane during construction times but must be opened to normal traffic outside of normal construction hours.
- c. Traffic control is a required item on this road. Payment will be made on qualified traffic control.

- d. Variable message boards are in the bid items for the warning of traffic to ever changing road conditions.
- e. Contractor must notify residents 24 hours prior to removal of house access and must re-establish access in a timely manner.
- f. The typical section for full depth repair will remain the same.

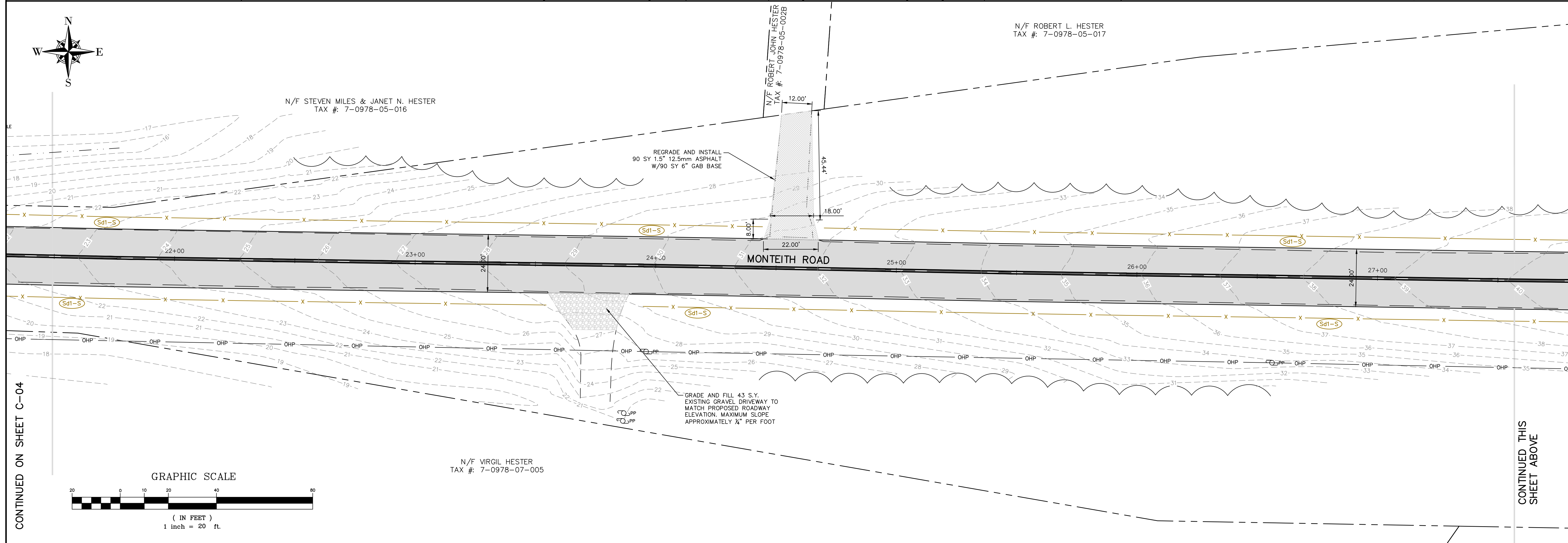
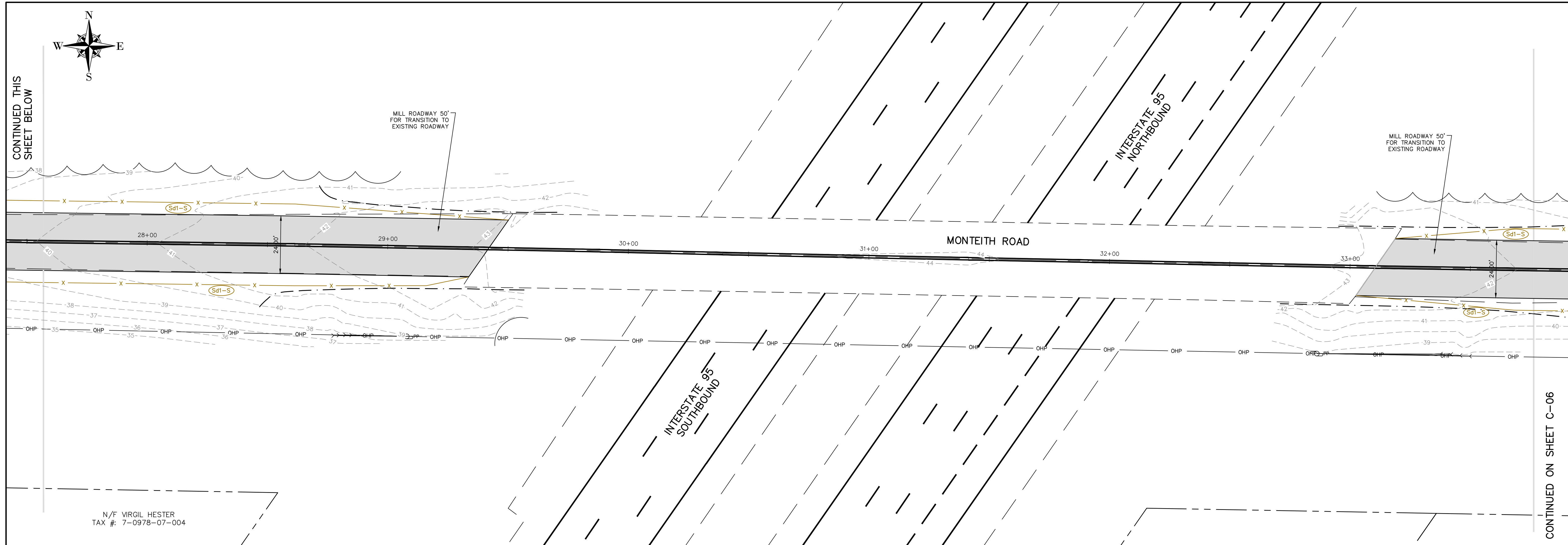
**ROADWAY IMPROVEMENTS FOR
HENDLEY ROAD AND MONTEITH ROAD
FOR THE CITY OF PORT WENTWORTH
SCHEDULE OF ITEMS
Date: March 19, 2019**

ITEM	DESCRIPTION	QUANTITY		COST	
		NUMBER OF UNITS	UNIT MEASURE	PER UNIT	TOTAL COST
IDENTIFICATION					
HENDLEY ROAD					
1	Asphalt Crack Repair	30650	LF		
2	Chip Seal, Single Surface #7, GDOT Section 424	7297	SY		
3	2" 12.5mm Asphalt Superpave	870	TONS		
4	1.5" 12.5mm Asphalt Superpave (Overlay)	10	TONS		
5	Structure Relocation	1	SUM		
6	Rebuild Shoulder	5166	LF		
7	Temporary Grassing	0.96	AC		
8	Permanent Grassing	0.96	AC		
9	Mulching	0.96	AC		
10	Haybale Check Dams	39	EA		
11	5" Solid Double Yellow	2583	LF		
12	5" Solid White	5200	LF		
13	24" White Stop Bar	2	EA		
14	Traffic Control	1	SUM		
15	Mobilization 3% Max	1	SUM		
SUBTOTAL HENDLEY ROAD					

**ROADWAY IMPROVEMENTS FOR
HENDLEY ROAD AND MONTEITH ROAD
FOR THE CITY OF PORT WENTWORTH
SCHEDULE OF ITEMS
Date: March 19, 2019**

ITEM	DESCRIPTION	QUANTITY		COST	
		NUMBER OF UNITS	UNIT MEASURE	PER UNIT	TOTAL COST
	IDENTIFICATION				
	MONTEITH ROAD				
1	Demo and Remove Existing Roadway (24" Depth)	2665	SY		
2	Transition Milling	620	SY		
3	Geotextile Fabric	2665	SY		
4	19" GAB Base	2665	SY		
5	5" 19mm Asphalt Superpave (2-2.5" layers)	780	TONS		
6	2' Roadway Widening	2578	SY		
7	12" GAB Base (2' Widening)	2578	SY		
8	2" 19mm Asphalt Superpave (2' widening)	300	TONS		
9	Asphalt Crack Repair	51260	LF		
10	Chip Seal, Single Surface #7, GDOT Section 424	15235	SY		
11	2" 12.5mm Asphalt Superpave (Overlay)	1760	TONS		
12	1.5" 12.5mm Asphalt Superpave Driveway	44	TONS		
13	Grade and Install 6" GAB	90	SY		
14	Grade and Fill Driveway with GAB	738	SY		
15	Remove & Replace 6" Concrete Driveway	50	SY		
16	Remove existing 36" RCP Pipe	40	LF		
17	Remove existing Concrete Wing Headwall	2	EA		
18	Junction Box	2	EA		
19	18" RCP Pipe	184	LF		
20	24" RCP Pipe	200	LF		
21	30" RCP Pipe	32	LF		
22	36" RCP Pipe	48	LF		

ITEM	DESCRIPTION	NUMBER OF UNITS	UNIT MEASURE	COST PER UNIT	TOTAL COST
23	18" FES	14	EA		
24	24" FES	16	EA		
25	30" FES	4	EA		
26	36" FES	1	EA		
27	Structure Relocation	1	SUM		
28	Rebuild Shoulder	5166	LF		
29	Regrade Ditches	5166	LF		
30	Temporary Grassing	2.31	AC		
31	Permanent Grassing	2.31	AC		
32	Mulching	2.31	AC		
33	Rolled Mating	2000	SY		
34	Haybale Check Dams	39	EA		
35	Slit Fence Ds1-NS	3187	LF		
36	5" Solid Double Yellow	3606	LF		
37	5" Solid Single Yellow	623	LF		
38	5" Skip Yellow	2152	LF		
39	5" Solid White	11516	LF		
40	24" White Stop Bar	4	EA		
41	Railroad Crossing Warning Markings	4	EA		
42	Traffic Control	1	SUM		
43	Variable Message Boards	2	EA		
44	Mobilization 3% Max	1	SUM		
SUBTOTAL MONTEITH ROAD					
GRAND TOTAL					
GRAND TOTAL IN WORDS					



THIS DRAWING IS THE PROPERTY OF T. R. LONG ENGINEERING, P.C. AND MAY NOT BE REPRODUCED, EITHER IN PART OR WHOLLY, IN ANY MANNER WITHOUT THE EXPRESS WRITTEN PERMISSION OF T. R. LONG ENGINEERING, P.C.

THE CONTRACTOR SHALL VERIFY ALL DIMENSIONS CONTAINED WITHIN THIS SET OF DOCUMENTS AND SHALL REPORT ANY DISCREPANCIES TO T. R. LONG ENGINEERING, P.C. FOR IMMEDIATE RESOLUTION.

GSWCF# 000002134

T. R. Long Engineering, P.C.
 SAVANNAH
 306 Commercial Drive
 Savannah, Georgia 31406
 Office (912) 335-1046

HINESVILLE
 114 North Commerce St.
 Hinesville, Georgia 31313
 Office (912) 368-5664

www.trlongeng.com

**ROADWAY IMPROVEMENTS
 FOR HENDLEY ROAD &
 MONTEITH ROAD
 CITY OF PORT WENTWORTH**

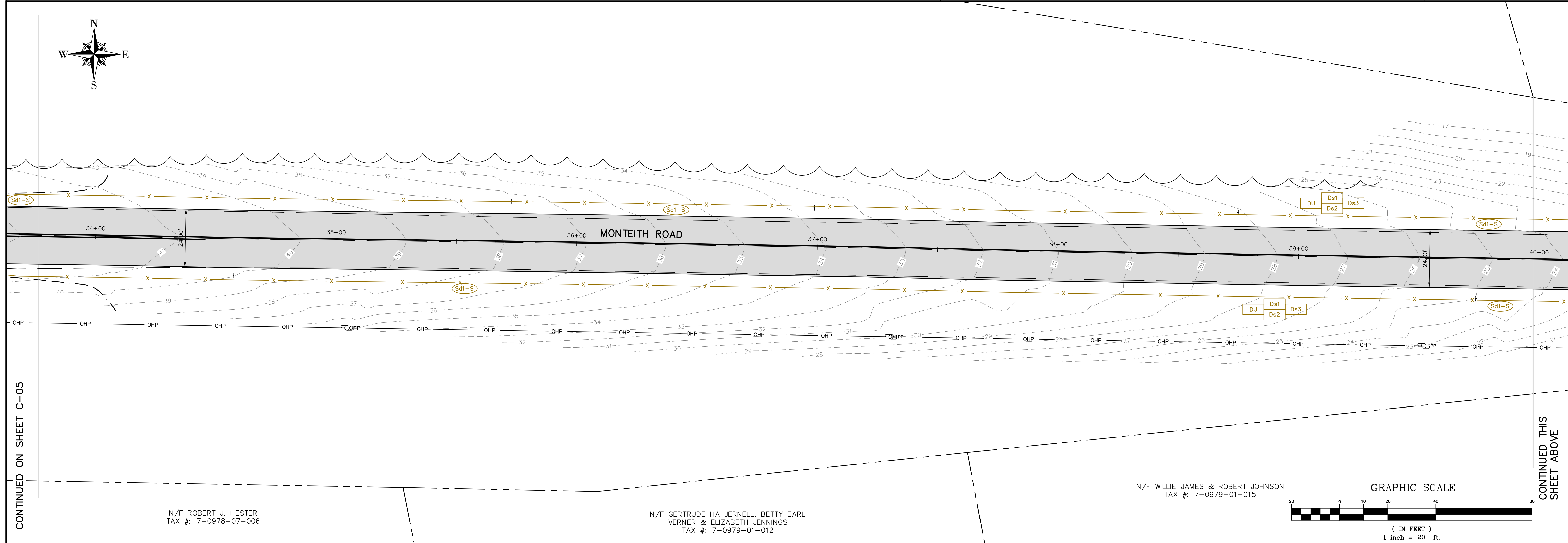
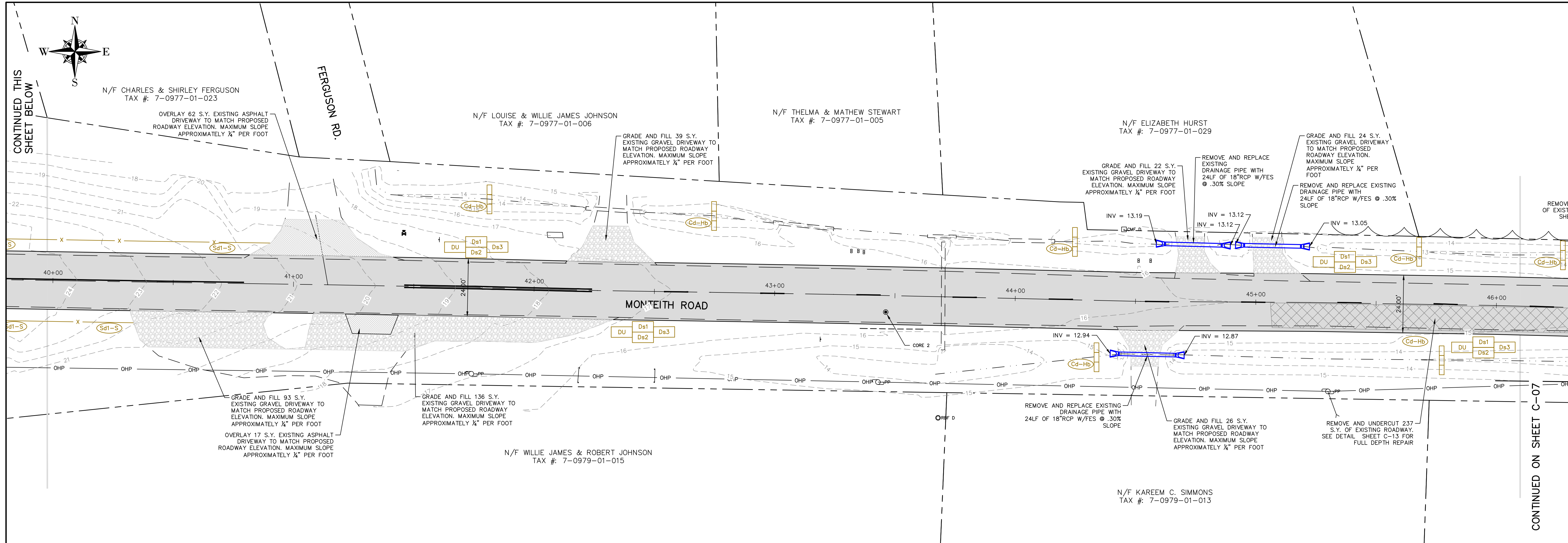
SHEET NAME:
 MONTEITH ROAD

REVISIONS:

1.	3/21/2019
2.	
3.	
4.	
5.	
6.	
7.	
8.	
9.	
10.	

INITIAL DATE: 09/12/2018
 DRAWN BY:
 CHECKED BY: TRL
 PROJECT #: 2018-145

SHEET NUMBER:
C-05



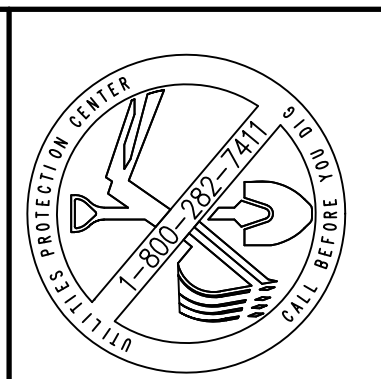
CONTINUED THIS SHEET BELOW

CONTINUED ON SHEET C-07

CONTINUED ON SHEET C-05

CONTINUED THIS SHEET ABOVE

GRAPHIC SCALE
(IN FEET)
1 inch = 20 ft.



THIS DRAWING IS THE PROPERTY OF T. R. LONG ENGINEERING, P.C. AND MAY NOT BE REPRODUCED, EITHER IN PART OR WHOLLY, IN ANY MANNER WITHOUT THE EXPRESS WRITTEN PERMISSION OF T. R. LONG ENGINEERING, P.C.

THE CONTRACTOR SHALL VERIFY ALL DIMENSIONS CONTAINED WITHIN THIS SET OF DOCUMENTS AND SHALL REPORT ANY DISCREPANCIES TO T. R. LONG ENGINEERING, P.C. FOR IMMEDIATE RESOLUTION.

GSWCF 0000020134

T. R. Long Engineering, P.C.
SAVANNAH
306 Commercial Drive
Savannah, Georgia 31406
Office (912) 335-1046

HINESVILLE
114 North Commerce St.
Hinesville, Georgia 31313
Office (912) 368-5664

www.trlongeng.com

ROADWAY IMPROVEMENTS
FOR HENDLEY ROAD &
MONTEITH ROAD
CITY OF PORT WENTWORTH

SHEET NAME:	MONTEITH ROAD
REVISIONS:	1. 3/21/2019
	2.
	3.
	4.
	5.
	6.
	7.
	8.
	9.
	10.
INITIAL DATE:	09/12/2018
DRAWN BY:	
CHECKED BY:	TRL
PROJECT #:	2018-145
SHEET NUMBER:	C-06