

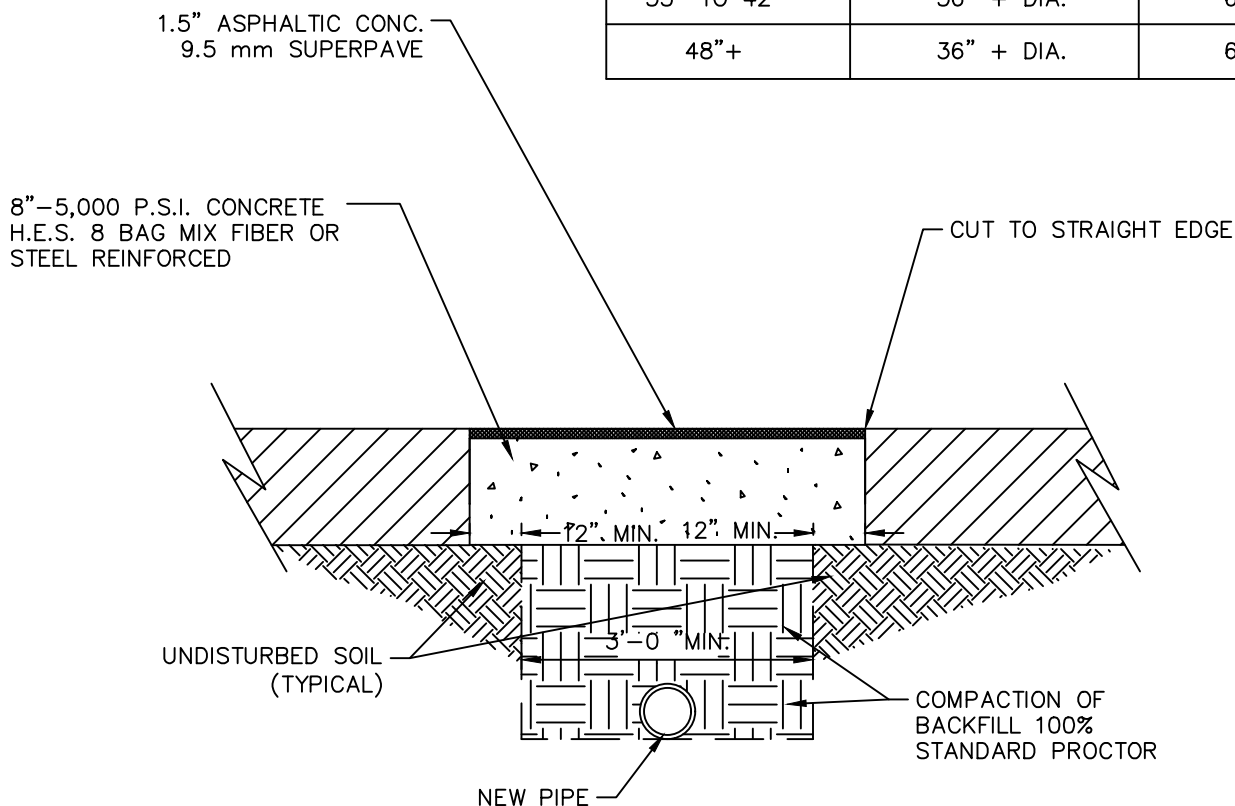
ADDENDUM NUMBER ONE  
TO  
REQUEST FOR BIDS, CONTRACT DOCUMENTS, CONSTRUCTION  
SPECIFICATIONS AND DRAWINGS  
FOR CONSTRUCTION OF

ROADWAY IMPROVEMENTS FOR EMERSON PARK

ACKNOWLEDGE RECEIPT OF THIS ADDENDUM BY INSERTING ITS NUMBER IN THE PROPOSAL. FAILURE TO DO SO MAY SUBJECT BONA FIDE PROPOSERS TO DISQUALIFICATION. THIS ADDENDUM FORMS A PART OF THE PROJECT DOCUMENTS; IT MODIFIES THEM AS FOLLOWS:

1. The question was asked why we were using 4' sections of RCP. The four (4) foot sections of Reinforced Concrete Pipe (RCP) were designed to minimize the quantity of RCP pipe in the project.
2. The attached "Bituminous Pavement Replacement" detail should be added to the construction plans.
3. Refer to the Schedule of Items and "Section 01150 Measurement and Payment item 2.08 Remove and Replace Fence" in the bid documents for the removal and replacement of existing fence.

PIPE DIAMETER	MAXIMUM TRENCH WIDTH	MAXIMUM PAYMENT WIDTH
6" TO 15"	16" + DIA.	40" + DIA.
18" TO 21"	20" + DIA.	44" + DIA.
24" TO 30"	24" + DIA.	48" + DIA.
33" TO 42"	36" + DIA.	60" + DIA.
48"+	36" + DIA.	60" + DIA.



100% COMPACTION OF BACKFILL  
PER COUNTY SPECIFICATIONS  
ASTM D698

NOTES:

1. COMPACT BASE AND SUB-BASE TO 100% STANDARD PROCTOR.
2. CONCRETE IN THE RIGHT OF WAY TO BE 5000 PSI AND REINFORCED WITH FIBERMESH OR STEEL.
3. ALL LATERAL STREET CUTS MUST BE COVERED WITH STEEL PLATES OF SUFFICIENT THICKNESS TO SPAN THE CUT WITHOUT NOTICABLE DEFLECTION. PLATES TO REMAIN IN PLACE UNTIL THE CONCRETE BASE HAS GAINED SUFFICIENT STRENGTH TO WITHSTAND TRAFFIC LOADS (24 HOUR MINIMUM).
4. ALL LONGITUDINAL CUTS EXCEEDING 150' IN LENGTH WILL REQUIRE AN ASPHALT OVERLAY OF THE ENTIRE ROADWAY WIDTH. CONCRETE IN THE TRENCH WILL BE BROUGHT FLUSH WITH THE EXISTING PAVEMENT. PAVING WILL BE SAW CUT TO A STRAIGHT EDGE AND THE ENTIRE WIDTH OF THE ROADWAY WILL BE RESURFACED WITH A MINIMUM OF 1.5" OF 9.5mm ASPHALT SUPERPAVE.
5. ALL STREET PATCHES MUST BE SQUARE OR RECTANGULAR WITH STRAIGHT, SAW CUT EDGES.



STANDARD CONSTRUCTION DETAILS  
BITUMINOUS PAVEMENT REPLACEMENT

APPROVED:  
DATE: NOVEMBER 2019

SCALE: N.T.S

DETAIL  
NUMBER

P07