

Drawing File: C:\ACTIVE PROJECTS\2025-076 H - Midway Fire Station Rehab\900-DRAWINGS\DWG\2025-076.dwg
Plotted Date: May 12, 2025 - 4:44pm

- ⊖ : 115V. DUPLEX RECEPTACLE
⊖GFCI : 115V GROUND FAULT CIRCUIT INTERRUPTER
⊖ : STOVE CONNECTION 240V 40A
⊖ : SURFACE MOUNT SMOKE DETECTOR
⊖ : BATTERY POWERED EMERGENCY LIGHT/EXIT SIGN
□ : LITHONIA TWP LED PHOTO SENSOR CONTROLLED LIGHT
○ : WALL MOUNTED, LITHONIA MODEL TWP LED 30C 700 50K T3M MVOLT DDBXD OR APPROVED EQUIVALENT
⊖ : EXHAUST FAN - LIGHT COMBO - VENT TO OUTSIDE AIR
⊖ : EXHAUST FAN - 50 CFM MIN - VENT TO OUTSIDE VAPOR PROOF LENSE & GFI AT SHOWER
J : JUNCTION BOX
△ : DATA OUTLET
⊖ : DATA OUTLET; CEILING MOUNTED

- : WALL MOUNTED, LITHONIA MODEL TWP LED 30C 700 50K T3M MVOLT DDBXD OR APPROVED EQUIVALENT
○ : CEILING MOUNTED, LITHONIA MODEL VRC LED 1 50K MVOLT OR APPROVED EQUIVALENT
LB1 : 2X2 LED TROFFER ARCHITECTURAL, CEILING RECESSED GRID, COLUMBIA LCAT2235MLEGEDU OR LITHONIA 2BLT233LADPEZILP835, 3500K LED, ACRYLIC LENS, 3000 LUMENS
H1 : 2X4 LED TROFFER, CEILING RECESSED GRID, COLUMBIA LCAT2435MLEGEDU OR LITHONIA 2BLT448LADPEZILP835, 3500K LED, ACRYLIC LENS, 4800 LUMENS

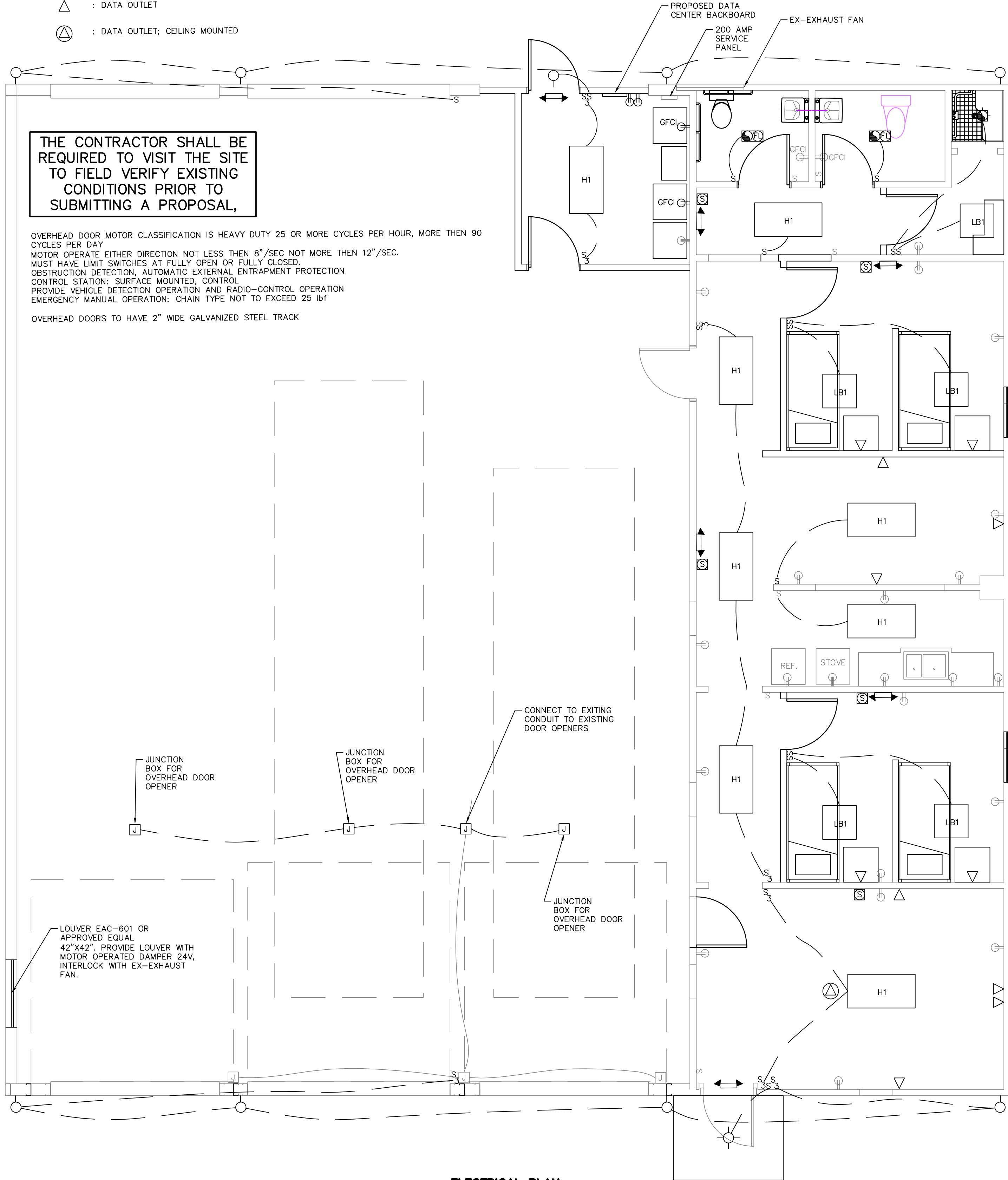
- (P1) MODIFY EXISTING WATER CLOSET ROUGH-IN AS REQUIRED; INSTALL AND CONNECT NEW TOILET COMPLETE
(P2) 1/2" HOT AND COLD WATER IN WALL, BRANCH, EXTEND AND CONNECT TO LAVATORY/SHOWER/WASHER/UTILITY SINK
(P3) REDUCING ELBOW OR REDUCING COMBINATION WITH 2" WASTE/VENT STACK IN WALL. EXTEND 2" VENT UP IN WALL TO FULL SIZE HEADER
(P4) RELOCATE EXISTING WATERLINE FOR ICE MACHINE TO LOCATION SHOWN, CONNECT DRAIN TO DRAINAGE SYSTEM
(P5) SWEEP ELBOW AND REDUCING BUSHING WITH 2" WASTE STACK, 2" SANITARY TEE, 2" DEEP-SEAL P-TRAP FOR WASHER OUTLET BOX CONNECTION/UTILITY SINK CONNECTION, CONNECT VENT TO VENT HEADER
(P6) REDUCING ELBOW OR REDUCING COMBINATION WITH 2" WASTE/VENT STACK FOR LAVATORY/SINK ROUGH-IN CONNECTION. EXTEND 2" VENT UP IN WALL TO FULL SIZE HEADER

SYM	DESCRIPTION
WC	WATER CLOSET, ADA RATED, FLOOR MOUNTED 1.6 GPF, 18" SEAT HEIGHT, VITREOUS CHINA
LAV	LAVATORY, ADA RATED, WALL MOUNTED, GRID DRAIN, VITREOUS CHINA, SINGLE LEVER FAUCET, 4" CENTERS
UTL	UTILITY SINK, WALL MOUNTED FAUCET

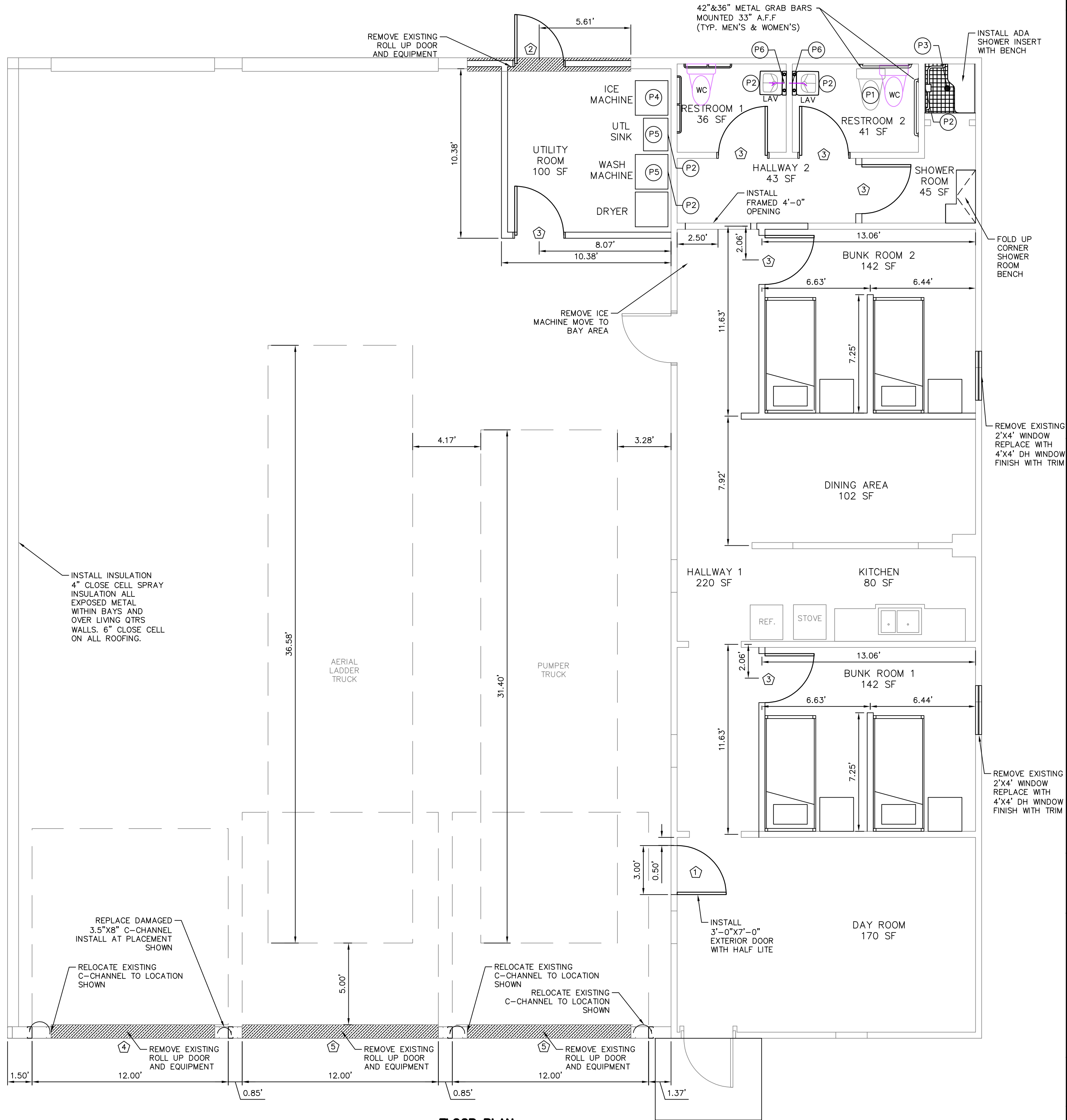
DOOR SCHEDULE			
NO.	OPENING SIZE	DOOR TYPE	DOOR TYPE
①	3'-0" X 7'-0" X 1 3/4"	INSULATED HOLLOW METAL, 4' INSULATED TEMPERED GLASS LITE	FACTORY PRIMED, PASSAGE SET, DEADBOLT, BUTT HINGES, CLOSER, WEATHERSTRIPPING, FLOOR STOP AND SILENCERS
②	3'-0" X 6'-8" X 1 3/4"	INSULATED HOLLOW METAL, FLUSH FACE	LOCKSET W/PANIC BAR, BUTT HINGES, CLOSER, WEATHERSTRIPPING, FLOOR STOP, SILENCERS
③	3'-0" X 6'-8" X 1 3/4"	HOLLOW CORE WOOD DOOR, FLUSH FACE	PRIVACY SET, BUTT HINGES, FLOOR STOP, SILENCERS
④	12'-0" X 13'-0" X 1 3/4"	INSULATED SECTIONAL DOOR, INSULATED TEMPERED GLASS LITE	OVERHEAD SECTIONAL DOOR, OVERHEAD DOOR HARDWARE, WEATHERSTRIPPING, ELECTRIC DOOR OPENER
⑤	13'-0" X 13'-0" X 1 3/4"	INSULATED SECTIONAL DOOR, INSULATED TEMPERED GLASS LITE	OVERHEAD SECTIONAL DOOR, OVERHEAD DOOR HARDWARE, WEATHERSTRIPPING, ELECTRIC DOOR OPENER

THE CONTRACTOR SHALL BE REQUIRED TO VISIT THE SITE TO FIELD VERIFY EXISTING CONDITIONS PRIOR TO SUBMITTING A PROPOSAL.

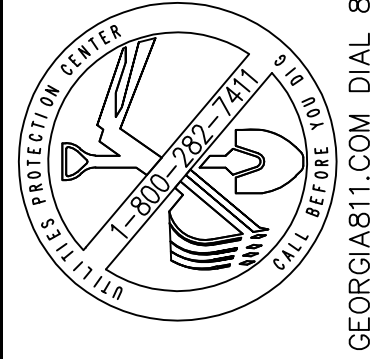
OVERHEAD DOOR MOTOR CLASSIFICATION IS HEAVY DUTY 25 OR MORE CYCLES PER HOUR, MORE THEN 90 CYCLES PER DAY.
MOTOR OPERATE EITHER DIRECTION NOT LESS THEN 8"/SEC NOT MORE THEN 12"/SEC.
MUST HAVE LIMIT SWITCHES AT FULLY OPEN OR FULLY CLOSED.
OBSTRUCTION DETECTION, AUTOMATIC EXTERNAL ENTRAPMENT PROTECTION
CONTROL STATION: SURFACE MOUNTED, CONTROL
PROVIDE VEHICLE DETECTION OPERATION AND RADIO-CONTROL OPERATION
EMERGENCY MANUAL OPERATION: CHAIN TYPE NOT TO EXCEED 25 lbf
OVERHEAD DOORS TO HAVE 2" WDE GALVANIZED STEEL TRACK



ELECTRICAL PLAN



FLOOR PLAN



THIS DRAWING IS THE PROPERTY OF T. R. LONG ENGINEERING, P.C. AND MAY NOT BE REPRODUCED, COPIED, OR TRANSMITTED IN ANY MANNER WITHOUT THE EXPRESS WRITTEN PERMISSION OF T. R. LONG ENGINEERING, P.C.
THE CONTRACTOR SHALL VERIFY ALL DIMENSIONS CONTAINED WITHIN THIS SET OF DOCUMENTS AND SHALL REPORT ANY DISCREPANCIES TO T. R. LONG ENGINEERING, P.C. FOR IMMEDIATE RESOLUTION.

HINESVILLE:
114 North Commerce Street
Hinesville, Georgia 31013
(912) 365-5664
STATESBORO:
302 S Zettrower Avenue
Statesboro, Georgia 30458
(912) 335-1046

TR LONG
ENGINEERING, P.C.

www.trlongeng.com

TAX PARCEL NUMBER: CITY, COUNTY, STATE

CITY OF MIDWAY
FIRE STATION
REHABILITATION

SHEET NAME:
FLOOR PLAN

REVISIONS:

1.	
2.	
3.	
4.	
5.	
6.	
7.	
8.	
9.	
10.	

INITIAL DATE: X/XX/XXXX
DRAWN BY: XXXX
CHECKED BY: TRL
PROJECT #: 2025-076

SHEET NUMBER:

C 1.0

GEORGIA811.COM DIAL 811
GSWCC# 0000002134

ANTI-SLIP FLOOR COATING SHALL BE SOLIDSTEP COAT CLEAR ABRASIVE ANTI-SLIP FLOOR COATING WITH SSC 03 GRIT OR APPROVED EQUIVALENT

REPLACE ALL EXISTING FIBERGLASS ROOF PANELS WITH STANDING SEAMS METAL ROOF PANELS MATCHING EXISTING METAL ROOF PANELS

REPLACE ALL EXISTING FIBERGLASS ROOF PANELS WITH STANDING SEAMS METAL ROOF PANELS MATCHING EXISTING METAL ROOF PANELS

REMOVE EXISTING ROLL UP DOOR AND EQUIPMENT

FRAME EXISTING OPENING FACE WITH SHEET METAL (SHEATHING, TRIM)

REPLACE ALL EXISTING FIBERGLASS ROOF PANELS WITH STANDING SEAMS METAL ROOF PANELS MATCHING EXISTING METAL ROOF PANELS

INSTALL NEW SIGN 8'X2'-4"

REPLACE ALL EXISTING FIBERGLASS ROOF PANELS WITH STANDING SEAMS METAL ROOF PANELS MATCHING EXISTING METAL ROOF PANELS

INSTALL 6.5'X5.0' OVER DOOR COVER

**CITY OF MIDWAY
FIRE SERVICES**

INSTALL 12'X12' INSULATED OVERHEAD DOOR WITH WINDOWS AT ABOUT 6'-0" HEIGHT

INSTALL 12'X13' INSULATED OVERHEAD DOOR WITH WINDOWS AT ABOUT 6'-0" HEIGHT

INSTALL 12'X13' INSULATED OVERHEAD DOOR WITH WINDOWS AT ABOUT 6'-0" HEIGHT

REPLACE ALL EXISTING FRONT FACE METAL

THIS DRAWING IS THE PROPERTY OF T. R. LONG ENGINEERING, P.C. AND MAY NOT BE REPRODUCED, EITHER IN PART OR WHOLLY, IN ANY MANNER WITHOUT THE EXPRESS WRITTEN PERMISSION OF T. R. LONG ENGINEERING, P.C.

THE CONTRACTOR SHALL VERIFY ALL DIMENSIONS CONTAINED WITHIN THIS SET OF DOCUMENTS AND SHALL REPORT ANY DISCREPANCIES TO T. R. LONG ENGINEERING, P.C. FOR IMMEDIATE RESOLUTION.

GSWCC# 0000002134

HINESVILLE:
114 North Commerce Street
Hinesville, Georgia 31313
(912) 368-5664

STATESBORO:
302 S Zetterlower Avenue
Statesboro, Georgia 30458
(912) 335-1046

TR LONG
ENGINEERING, P.C.

www.trlongeng.com

www.trlongeng.com

CITY OF MIDWAY
FIRE STATION
REHABILITATION

TAX PARCEL NUMBER: CITY, COUNTY, STATE

SHEET NAME:
ELEVATIONS

INITIAL DATE: X/XX/XXXX
DRAWN BY: XXX
CHECKED BY: TRL
PROJECT #: 2025-076

SHEET NUMBER:

C 1.1