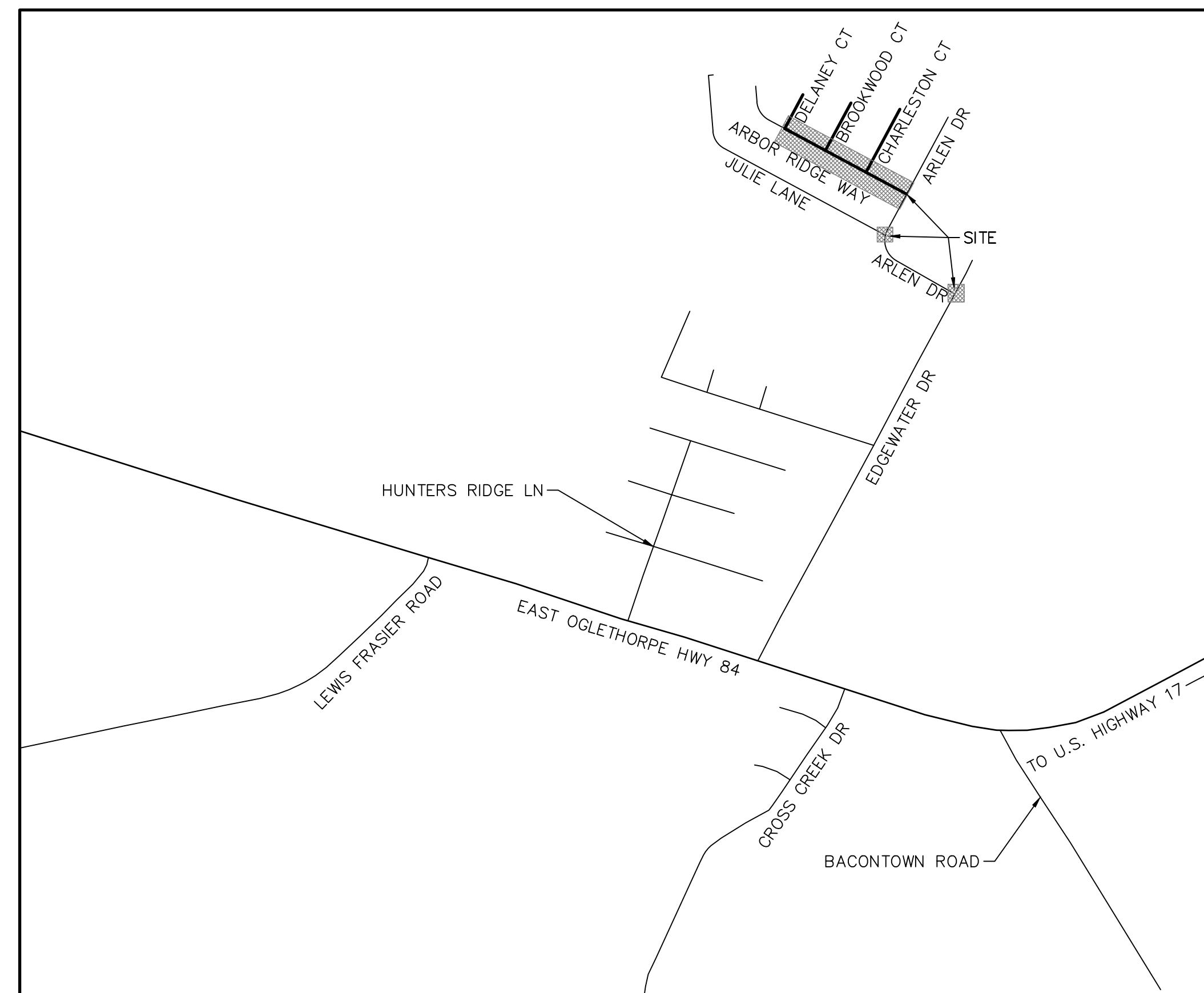


# ARLEN OAKS ROADWAY IMPROVEMENTS FOR CITY OF MIDWAY

**OWNER**  
CITY OF MIDWAY  
P.O. BOX 125  
MIDWAY, GA 31320  
(912)884-3344

**24-HOUR CONTACT**  
CITY OF MIDWAY  
(912)884-3344  
TERRELL CHIP

**ENGINEER**  
T. R. LONG ENGINEERING, P.C.  
114 NORTH COMMERCE STREET  
HINESVILLE, GEORGIA 31313  
(912) 368-5664

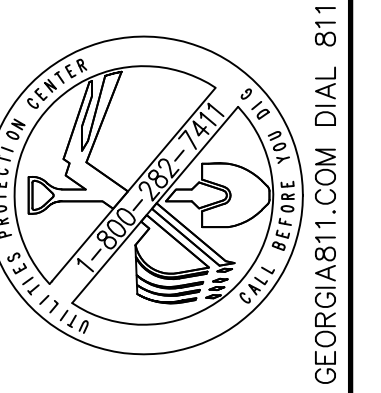


VICINITY MAP N.T.S.

LOCATION: N31° 48' 28.67", W81° 27' 13.78"  
(30.807964, -81.453829)  
DISTURBED ACREAGE: 0.80 AC.  
TOTAL SITE ACREAGE: 1.0 AC.

Sheet List Table	
Sheet Number	Sheet Title
C1	TITLE SHEET
C2	ROADWAY CROSS SECTION
C3	PLAN SHEET
C4	PLAN SHEET
C5	DETAILS
C6	DETAILS

DRAWING LEGEND		
DESCRIPTION	PROPOSED	EXISTING
RIGHT OF WAY	— R/W —	— R/W —
EDGE OF PAVEMENT	—	—
DITCH CENTERLINE	— · · · —	— · · · —
SANITARY SEWER	— 8" S —	— 8" S —
WATER LINE	— 10" W —	— 10" W —
FORCE MAIN	— FM —	— FM —
UNDERGROUND GAS LINE	— 8" G —	— 8" G —
CONTOURS	— 81 —	— 81 —
STORM DRAINAGE PIPE	— S —	— S —
ELEVATION	⊕ FG: 78.15	X 81.90
SILT FENCE NON-SENSITIVE	⊕ S1-N	
SILT FENCE SENSITIVE	⊕ S1-S	
INLET PROTECTION	⊕ Sd1-P	
CHECK DAM - HAY BALE	⊕ Cd-Hb	
CHECK DAM - RIP RAP	⊕ Cd-Rp	
CONSTRUCTION EXIT	⊕ Co	
STORM OUTLET PROTECTION	⊕ St	
SILT FENCE	⊕ S1	
MULCHING	⊕ Ds1	
TEMPORARY GRASSING	⊕ Ds2	
PERMANENT GRASSING	⊕ Ds3	
FIRE HYDRANT	⊕ Fh	
SEWER MANHOLE	⊕ Sm	
WATER VALVE	⊕ Wv	
DRAINAGE FLOW	⊕ Df	
WATER METER	⊕ Wm	
BENCHMARK	⊕ Bm	
WELL	⊕ Wl	
GUY POLE	⊕ Gp	
IRON PIN	⊕ Ip	
TELEPHONE PEDESTAL	⊕ Tp	
POWER POLE	⊕ Pp	
	SET	FOUND
	⊕ I.P.S	⊕ I.P.F
	⊕	⊕



THIS DRAWING IS THE PROPERTY OF T. R. LONG ENGINEERING, P.C. AND MAY NOT BE REPRODUCED, COPIED, OR IN ANY MANNER WITHOUT THE WRITTEN PERMISSION OF T. R. LONG ENGINEERING, P.C. THE CONTRACTOR SHALL VERIFY ALL DIMENSIONS CONTAINED WITHIN THIS SET OF DOCUMENTS AND SHALL REPORT ANY DISCREPANCIES TO T. R. LONG ENGINEERING, P.C. FOR IMMEDIATE RESOLUTION.

GSWCC# 00000202134

HINESVILLE:  
114 North Commerce Street  
Hinesville, Georgia 31313  
(912) 368-5664  
STATESBORO:  
302 S Zettrower Avenue  
Statesboro, Georgia 30458  
(912) 335-1046



ARLEN OAKS  
ROADWAY IMPROVEMENTS  
FOR  
CITY OF MIDWAY  
ARLEN OAKS SUBDIVISION - MIDWAY, GEORGIA

SHEET NAME:  
TITLE SHEET

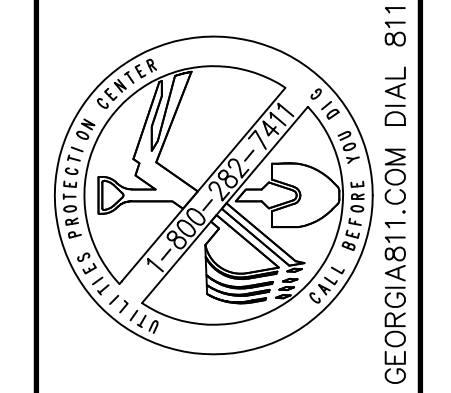
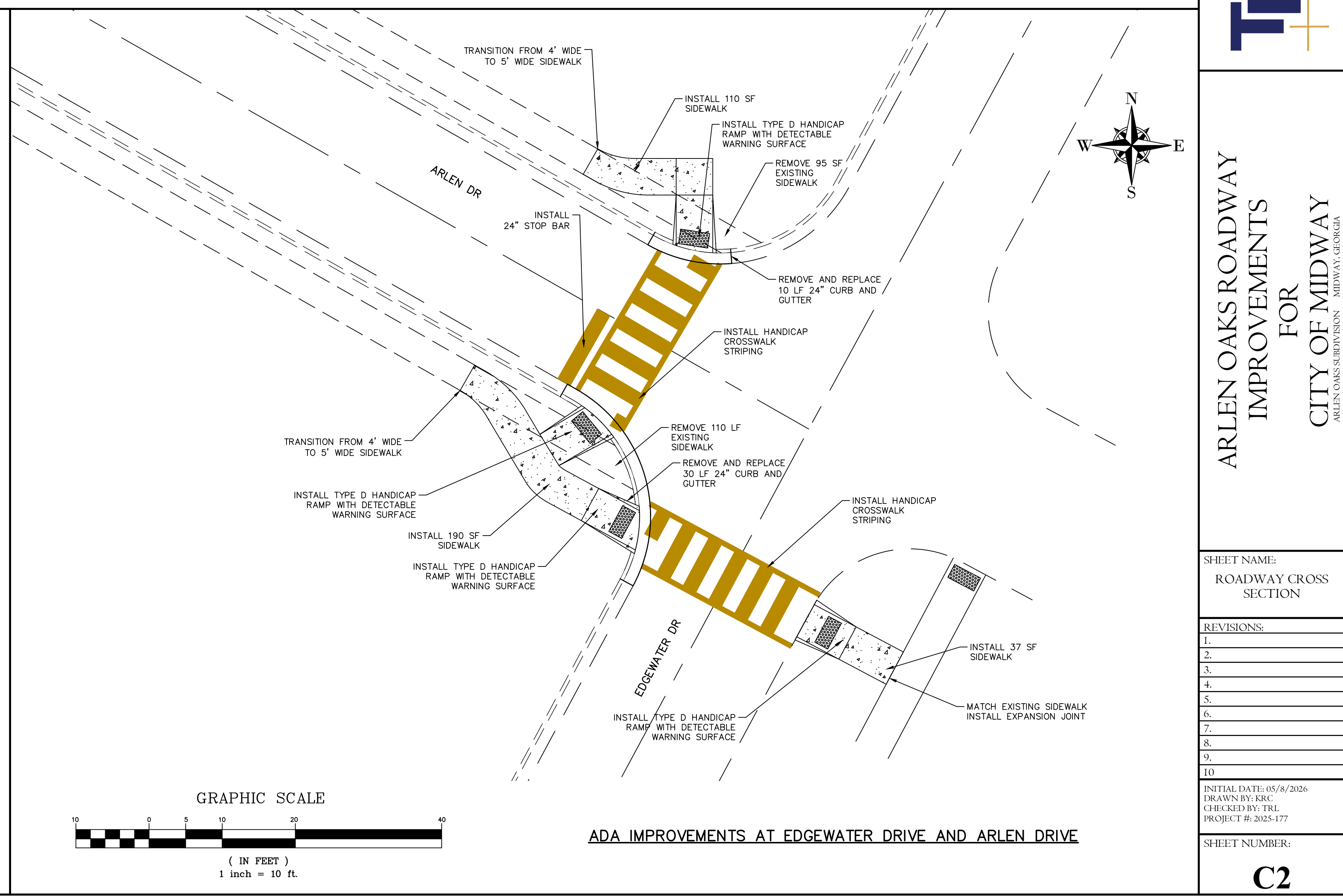
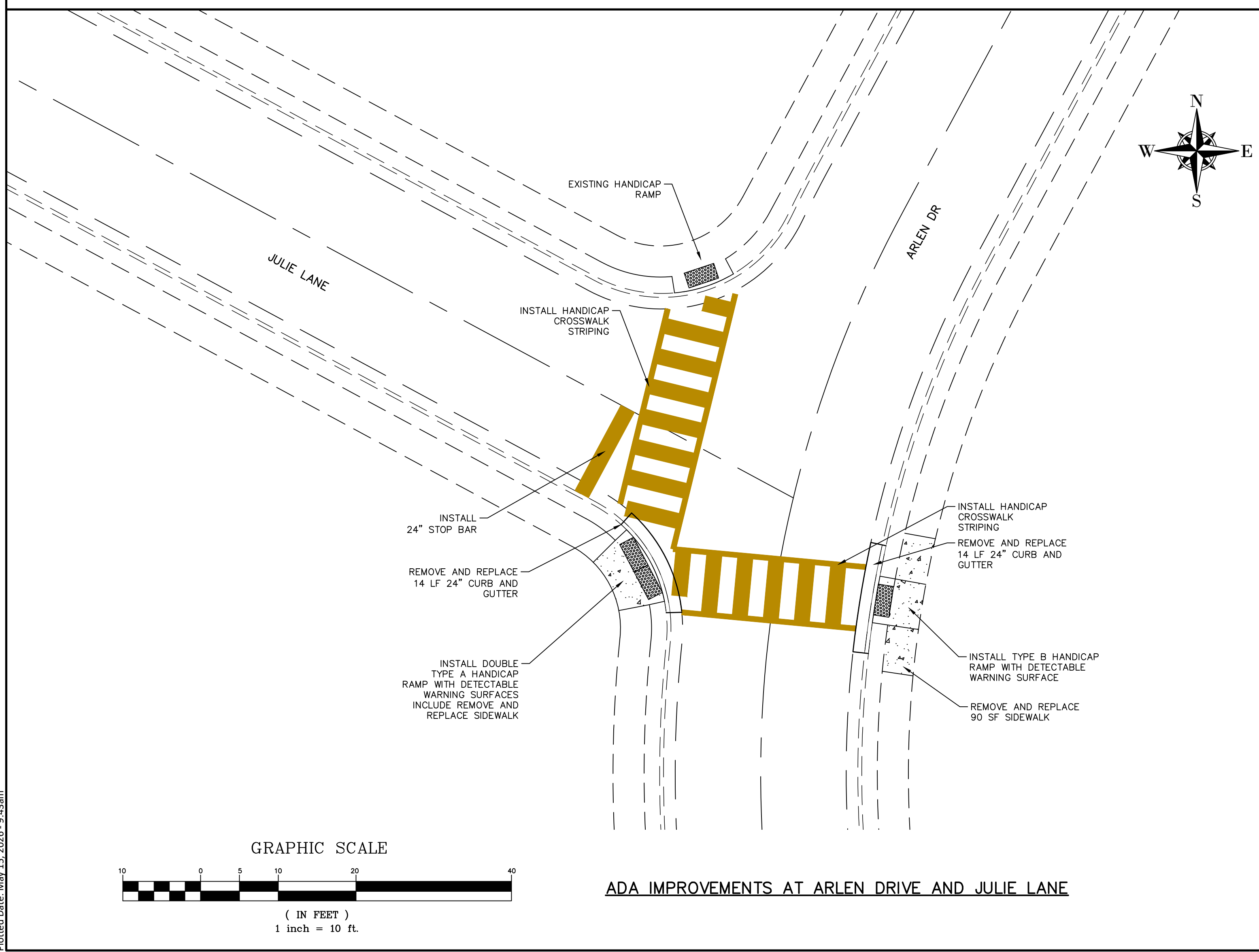
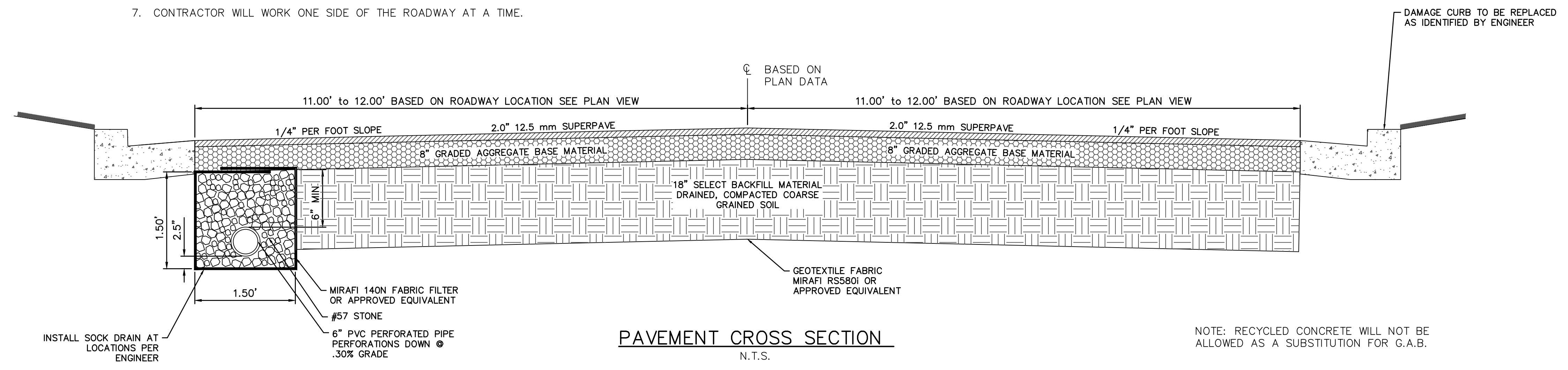
REVISIONS:
1.
2.
3.
4.
5.
6.
7.
8.
9.
10.

INITIAL DATE: 05/8/2026  
DRAWN BY: KRC  
CHECKED BY: TRL  
PROJECT #: 2025-177

SHEET NUMBER:

**C1**

- NOTES:
1. RECYCLED CONCRETE WILL NOT BE ALLOWED AS A SUBSTITUTION FOR G.A.B.
  2. UNDERCUT THE ROAD TO A DEPTH REACHING 28" BELOW BOTTOM OF PLANNED PAVEMENT ELEVATIONS
  3. GRADE BOTTOM OF UNDERCUT EXCAVATION TO PROMOTE POSITIVE DRAINAGE TOWARD NEW UNDER DRAIN SYSTEM.
  4. GEOTEXTILE FABRIC (MIRAFI RS580i OR PRE-APPROVED EQUIVALENT) SHALL BE PLACED ON EXPOSED SOIL RESIDING AT BOTTOM OF UNDERCUT TO ACHIEVE STABILITY FOR SUCCESSFUL COMPACTION EFFORTS ON BACKFILL MATERIALS.
  5. BACKFILL SHALL CONSIST OF SANDY TYPE SOIL -SP OR SP-SM (MAXIMUM OF 12% PASSING THE #200 SIEVE).
  6. BACKFILL SHALL BE PLACED IN MAXIMUM 8-INCH LOOSE LIFT THICKNESS WITH EACH LIFT COMPACTED TO AT LEAST 95% ASTM D-1557 PRIOR TO PLACEMENT OF SUBSEQUENT LIFTS.
  7. CONTRACTOR WILL WORK ONE SIDE OF THE ROADWAY AT A TIME.



THIS DRAWING IS THE PROPERTY OF T. R. LONG ENGINEERING, P.C. AND MAY NOT BE REPRODUCED, EITHER IN PART OR WHOLLY, IN ANY MANNER WITHOUT THE WRITTEN PERMISSION OF T. R. LONG ENGINEERING, P.C.

THE CONTRACTOR SHALL VERIFY ALL DIMENSIONS CONTAINED WITHIN THIS SET OF DOCUMENTS AND SHALL REPORT ANY DISCREPANCIES TO T. R. LONG ENGINEERING, P.C. FOR IMMEDIATE RESOLUTION.

HINESVILLE:  
114 North Commerce Street  
Hinesville, Georgia 31313  
(912) 365-5664

STATESBORO:  
302 S Zettrower Avenue  
Statesboro, Georgia 30458  
(912) 335-1046



**ARLEN OAKS ROADWAY IMPROVEMENTS FOR CITY OF MIDWAY**  
ARLEN OAKS SUBDIVISION - MIDWAY, GEORGIA

SHEET NAME:  
**ROADWAY CROSS SECTION**

REVISIONS:

1.	
2.	
3.	
4.	
5.	
6.	
7.	
8.	
9.	
10.	

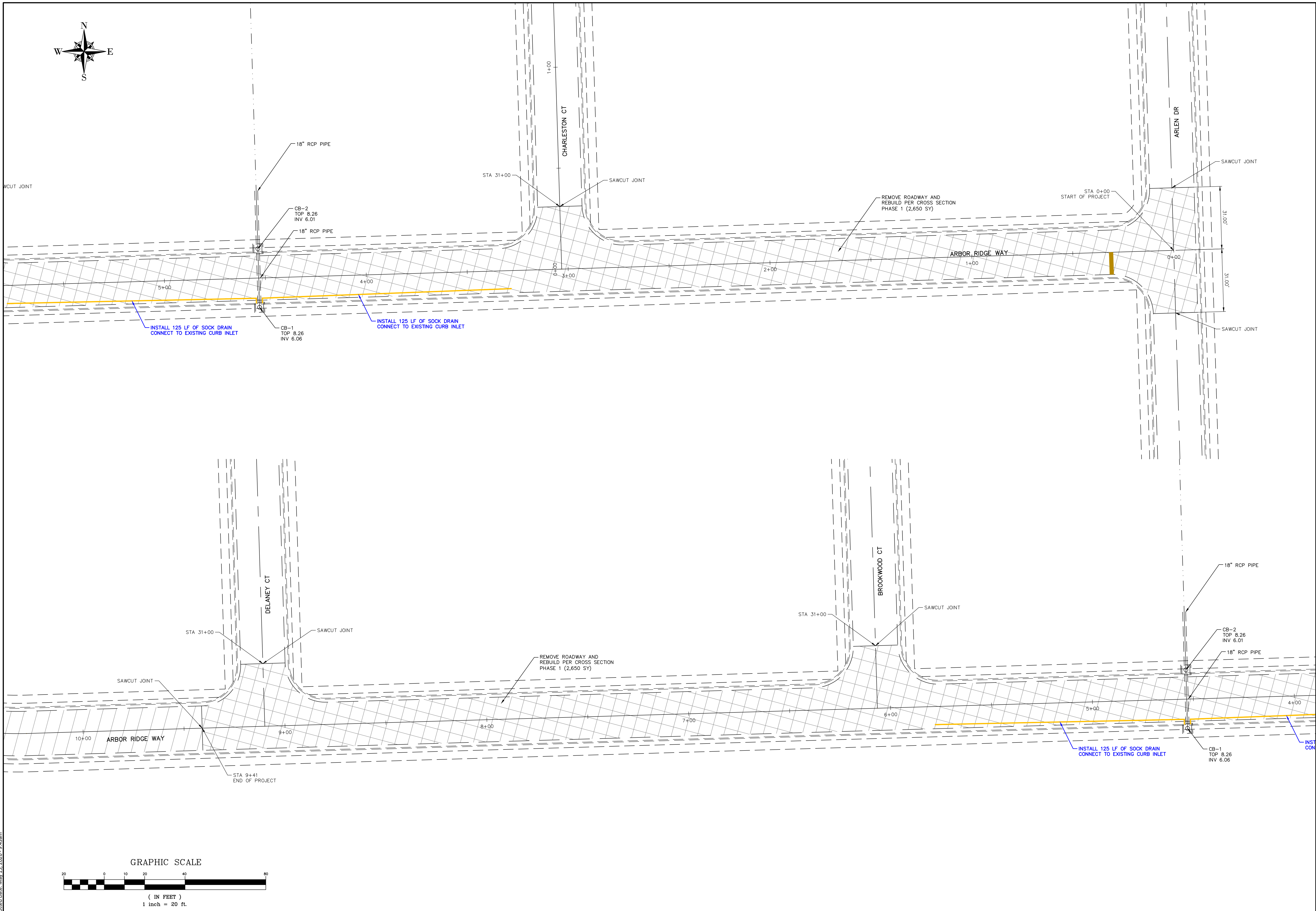
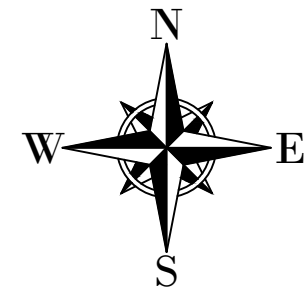
INITIAL DATE: 05/8/2026  
DRAWN BY: KRC  
CHECKED BY: TRL  
PROJECT #: 2025-177

SHEET NUMBER:  
**C2**

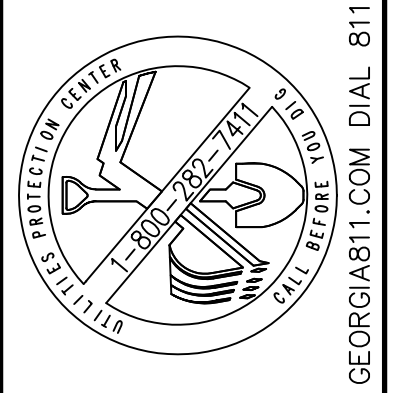
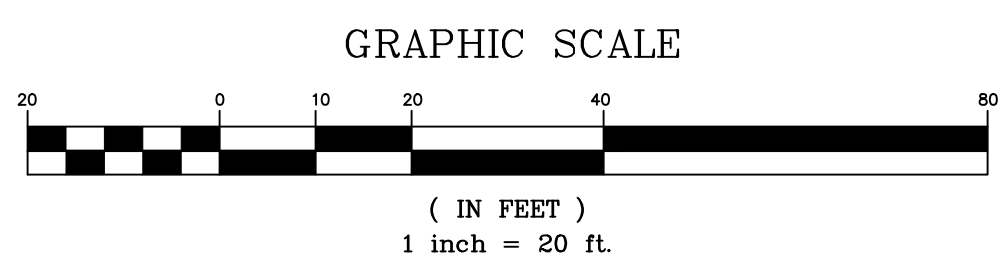
Drawing File: C:\active projects\2025-177 h - arlen oaks roadway improvements\90-drawings\DWG\CONST\2025-177.dwg  
Plotted Date: May 15, 2026 - 9:43am

GSMCC# 000002134

www.trlongeng.com



Drawing File: C:\active projects\2025-177 h - arlen oaks roadway improvements\90-drawings\DWG\CONST\2025-177.dwg  
Plotted Date: May 15, 2026 - 9:43am



THIS DRAWING IS THE PROPERTY OF T. R. LONG ENGINEERING, P.C. AND MAY NOT BE REPRODUCED, EITHER IN PART OR WHOLLY, IN ANY MANNER WITHOUT THE EXPRESS WRITTEN PERMISSION OF T. R. LONG ENGINEERING, P.C.  
THE CONTRACTOR SHALL VERIFY ALL DIMENSIONS CONTAINED WITHIN THIS SET OF DOCUMENTS AND SHALL REPORT ANY DISCREPANCIES TO T. R. LONG ENGINEERING, P.C. FOR IMMEDIATE RESOLUTION.

GSWCC# 00000202134

HINESVILLE:  
114 North Commerce Street  
Hinesville, Georgia 31013  
(912) 365-5664  
STATESBORO:  
302 S Zetterover Avenue  
Statesboro, Georgia 30458  
(912) 335-1046



# ARLEN OAKS ROADWAY IMPROVEMENTS FOR CITY OF MIDWAY

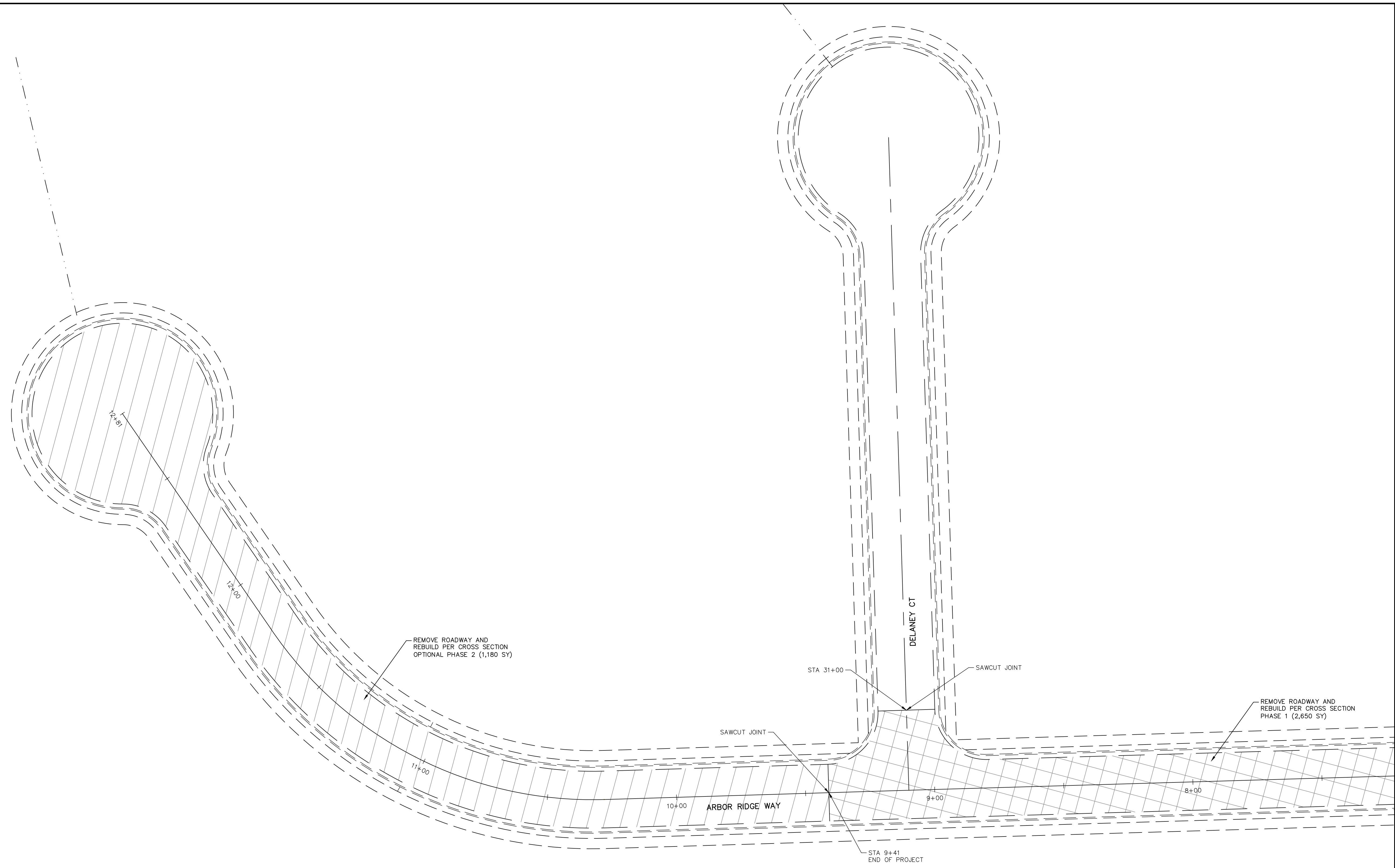
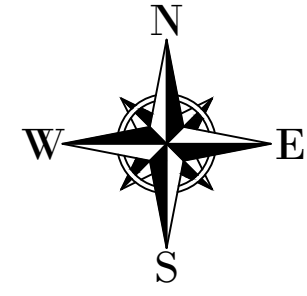
ARLEN OAKS SUBDIVISION - MIDWAY, GEORGIA

SHEET NAME:  
ROADWAY CROSS SECTION

NO.	REVISIONS
1.	
2.	
3.	
4.	
5.	
6.	
7.	
8.	
9.	
10.	

INITIAL DATE: 05/8/2026  
DRAWN BY: KRC  
CHECKED BY: TRL  
PROJECT #: 2025-177

SHEET NUMBER:  
**C2**



REMOVE ROADWAY AND REBUILD PER CROSS SECTION OPTIONAL PHASE 2 (1,180 SY)

STA 31+00

SAWCUT JOINT

DELANEY CT

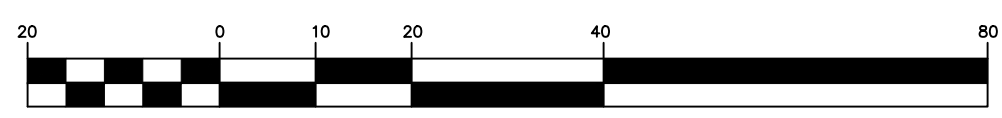
REMOVE ROADWAY AND REBUILD PER CROSS SECTION PHASE 1 (2,650 SY)

SAWCUT JOINT

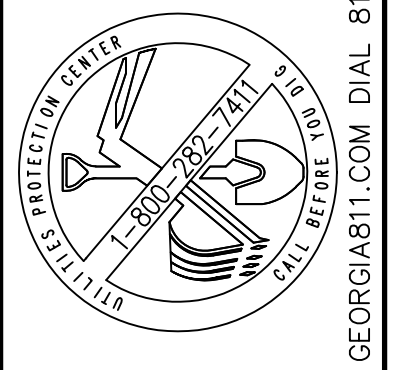
ARBOR RIDGE WAY

STA 9+41  
END OF PROJECT

GRAPHIC SCALE



( IN FEET )  
1 inch = 20 ft.



THIS DRAWING IS THE PROPERTY OF T. R. LONG ENGINEERING, P.C. AND MAY NOT BE REPRODUCED, EITHER IN PART OR WHOLLY, IN ANY MANNER WITHOUT EXPRESS WRITTEN PERMISSION OF T. R. LONG ENGINEERING, P.C.  
THE CONTRACTOR SHALL VERIFY ALL DIMENSIONS CONTAINED WITHIN THIS SET OF DOCUMENTS AND SHALL REPORT ANY DISCREPANCIES TO T. R. LONG ENGINEERING, P.C. FOR IMMEDIATE RESOLUTION.

GSMCC# 000002134

HINESVILLE:  
114 North Commerce Street  
Hinesville, Georgia 31013  
(912) 366-5664  
STATESBORO:  
302 S Zettrower Avenue  
Statesboro, Georgia 30458  
(912) 335-1046



ARLEN OAKS ROADWAY  
IMPROVEMENTS  
FOR  
CITY OF MIDWAY  
ARLEN OAKS SUBDIVISION, MIDWAY, GEORGIA

SHEET NAME:  
PLAN SHEET

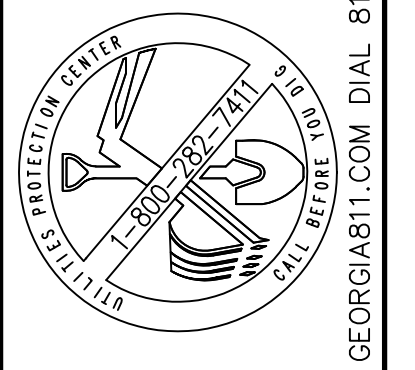
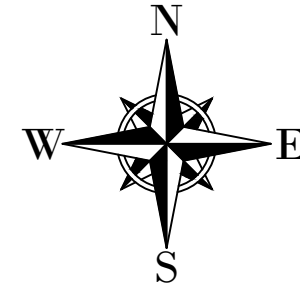
REVISIONS:
1.
2.
3.
4.
5.
6.
7.
8.
9.
10.

INITIAL DATE: 05/8/2026  
DRAWN BY: KRC  
CHECKED BY: TRL  
PROJECT #: 2025-177

SHEET NUMBER:

C4

Drawing File: C:\active projects\2025-177 h - arlen oaks roadway improvements\90-drawings\DWG\CONST\2025-177.dwg  
Plotted Date: May 15, 2026 - 9:43am



THIS DRAWING IS THE PROPERTY OF T. R. LONG ENGINEERING, P.C. AND MAY NOT BE REPRODUCED, EITHER IN PART OR WHOLLY, IN ANY MANNER WITHOUT THE EXPRESS WRITTEN PERMISSION OF T. R. LONG ENGINEERING, P.C.

THE CONTRACTOR SHALL VERIFY ALL DIMENSIONS CONTAINED WITHIN THIS SET OF DOCUMENTS AND SHALL REPORT ANY DISCREPANCIES TO T. R. LONG ENGINEERING, P.C. FOR IMMEDIATE RESOLUTION.

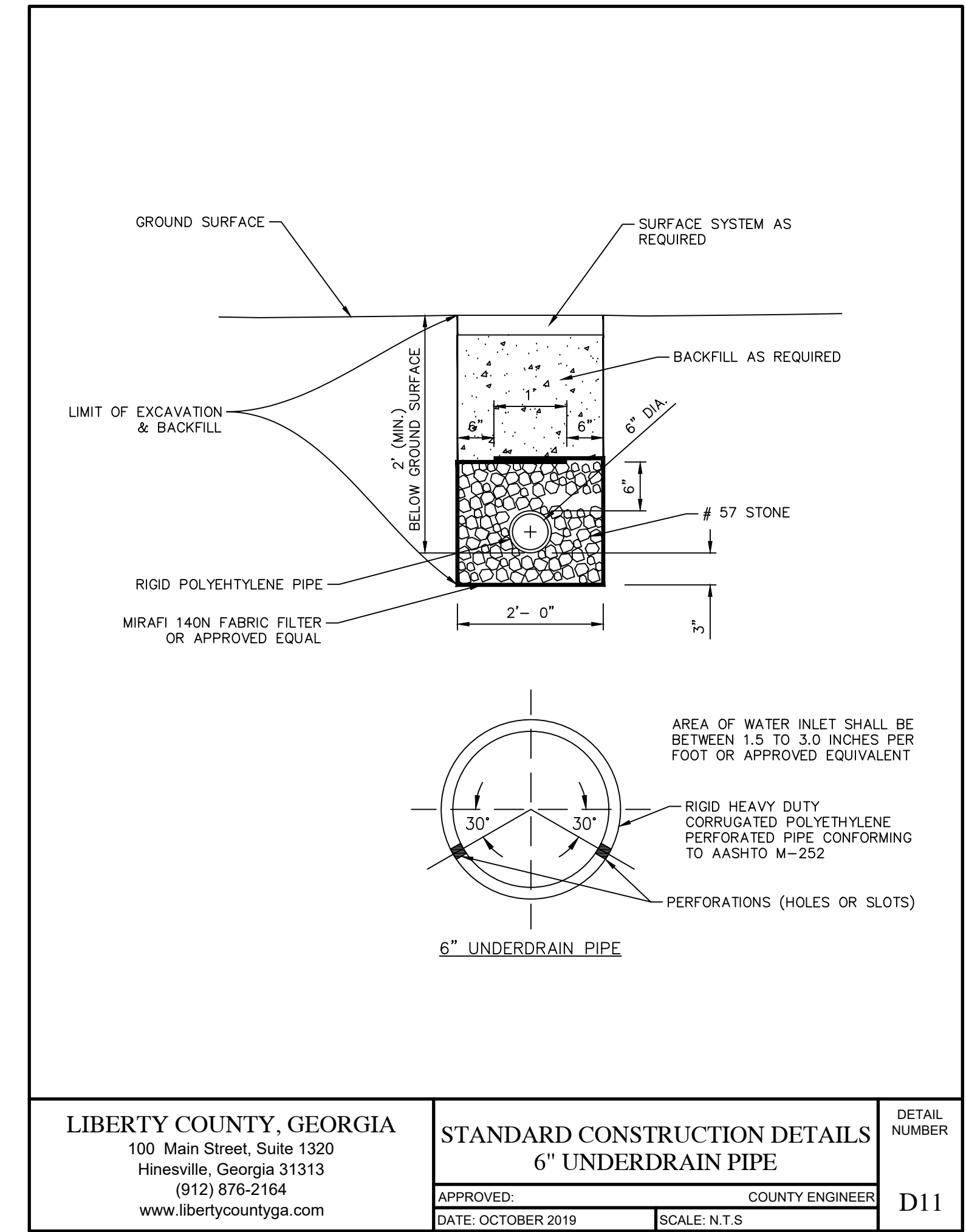
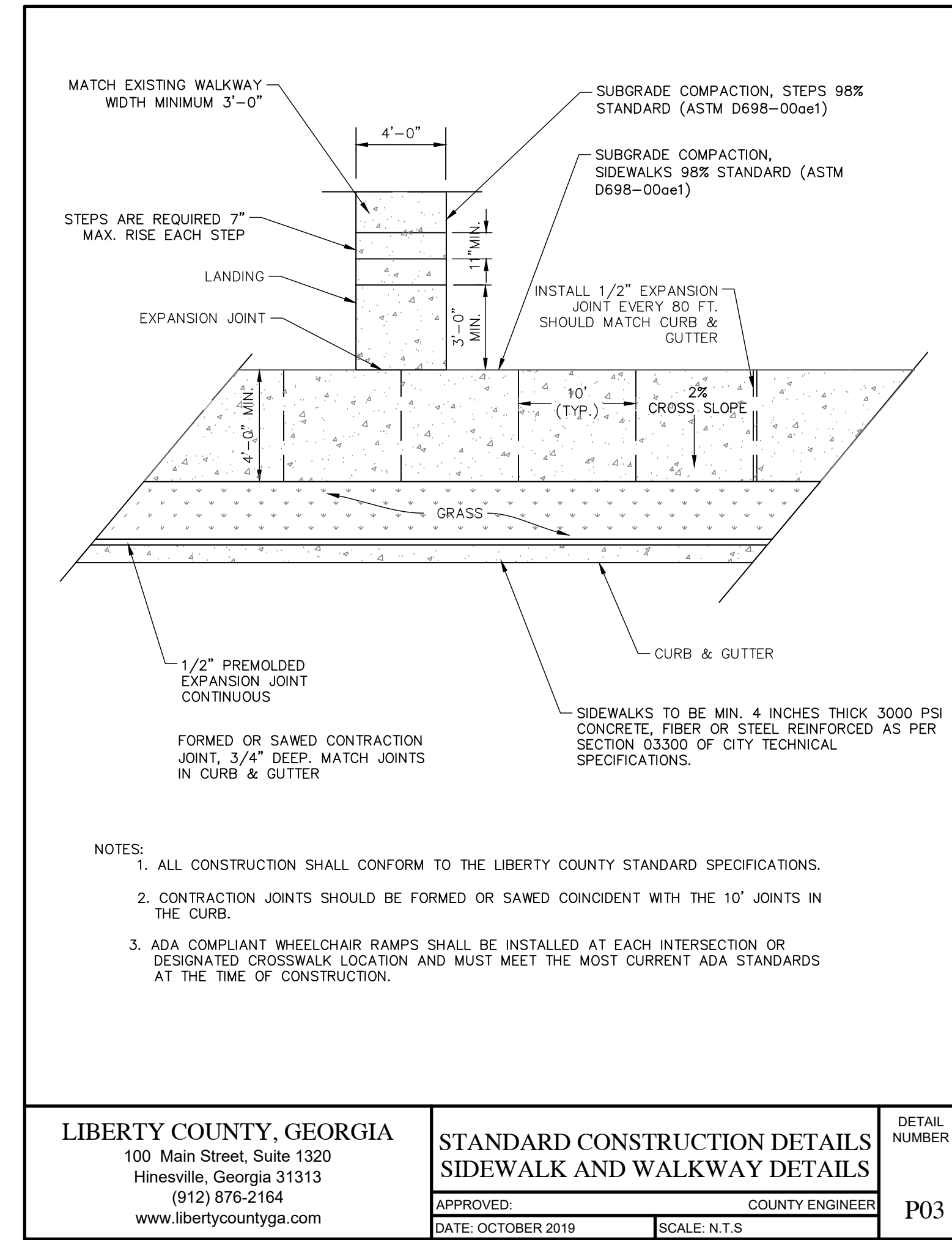
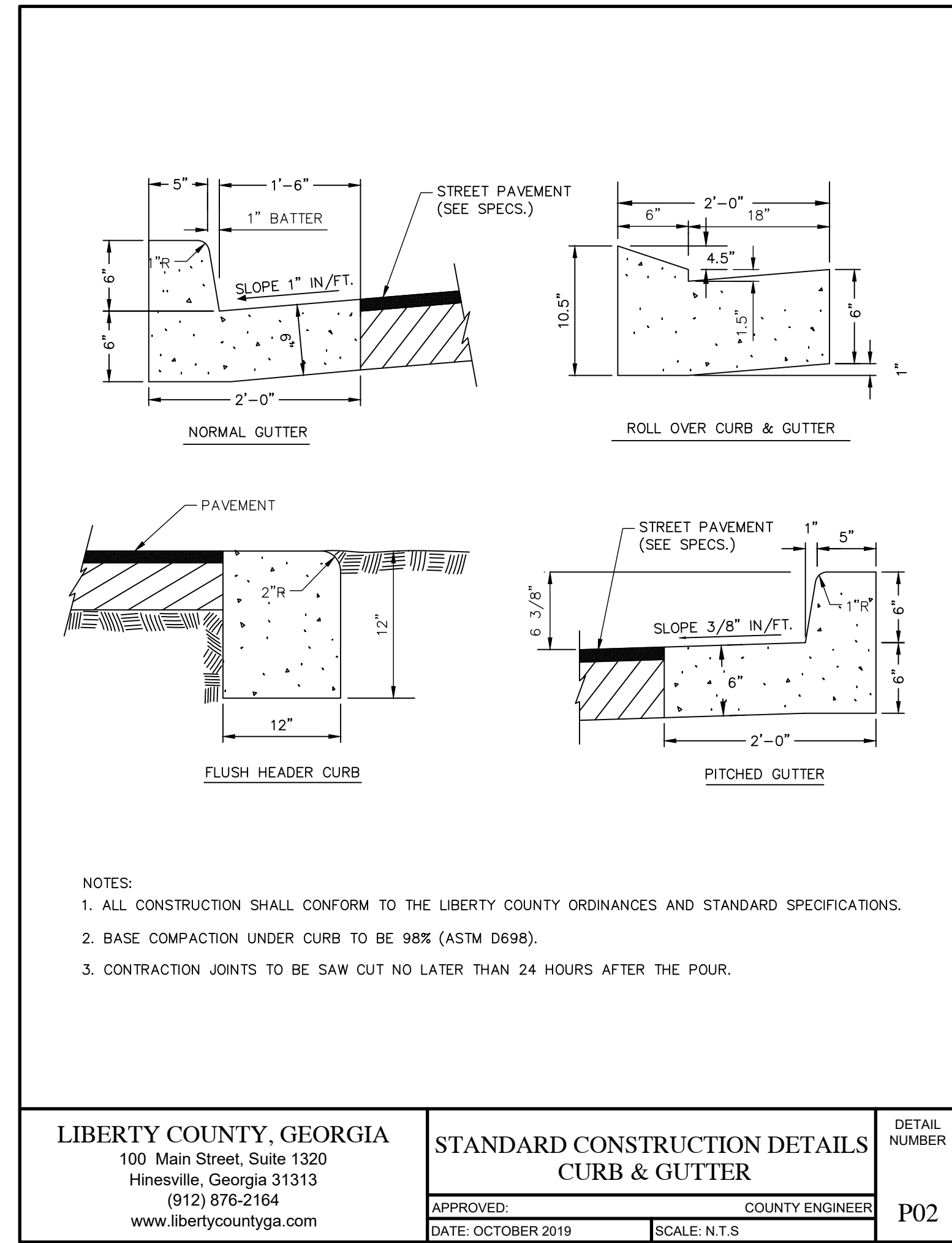
GSWCC# 000002134

HINESVILLE:  
114 North Commerce Street  
Hinesville, Georgia 31313  
(912) 365-5664

STATESBORO:  
302 S. Zettrower Avenue  
Statesboro, Georgia 30458  
(912) 335-1046



ARLEN OAKS ROADWAY  
IMPROVEMENTS  
FOR  
CITY OF MIDWAY  
ARLEN OAKS SUBDIVISION, MIDWAY, GEORGIA



SHEET NAME:  
DETAILS

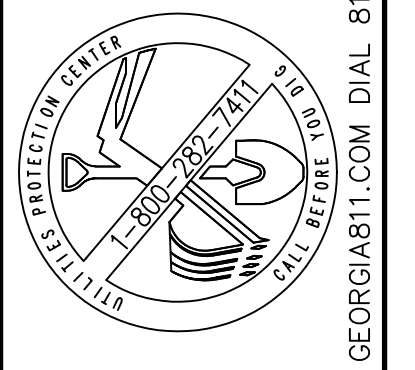
REVISIONS:

1.	
2.	
3.	
4.	
5.	
6.	
7.	
8.	
9.	
10.	

INITIAL DATE: 05/8/2026  
DRAWN BY: KRC  
CHECKED BY: TRL  
PROJECT #: 2025-177

SHEET NUMBER:  
**C5**

Drawing File: C:\active projects\2025-177 h - arlen oaks roadway improvements\90-drawings\DWG\CONST\2025-177.dwg  
Plotted Date: May 15, 2026 - 9:43am



THIS DRAWING IS THE PROPERTY OF T. R. LONG ENGINEERING, P.C. AND MAY NOT BE REPRODUCED, COPIED, EITHER IN PART OR WHOLLY, IN ANY MANNER WITHOUT THE WRITTEN PERMISSION OF T. R. LONG ENGINEERING, P.C. THE CONTRACTOR SHALL VERIFY ALL DIMENSIONS CONTAINED WITHIN THIS SET OF DOCUMENTS AND SHALL REPORT ANY DISCREPANCIES TO T. R. LONG ENGINEERING, P.C. FOR IMMEDIATE RESOLUTION.

HINESVILLE: 114 North Commerce Street Hinesville, Georgia 31013 (912) 365-5664  
STATESBORO: 302 S Zettrower Avenue Statesboro, Georgia 30458 (912) 335-1046

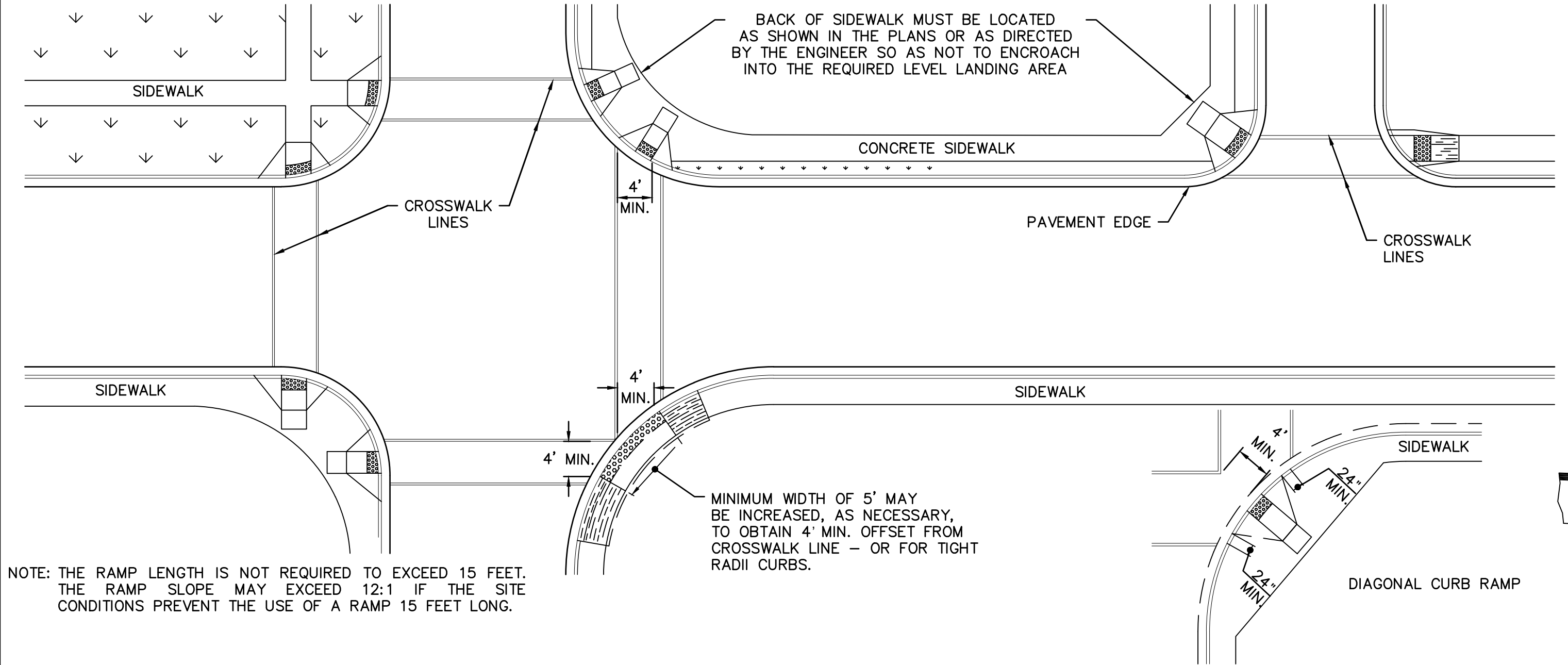
ARLEN OAKS ROADWAY IMPROVEMENTS FOR CITY OF MIDWAY  
ARLEN OAKS SUBDIVISION - MIDWAY, GEORGIA



ARLEN OAKS ROADWAY IMPROVEMENTS FOR CITY OF MIDWAY  
ARLEN OAKS SUBDIVISION - MIDWAY, GEORGIA

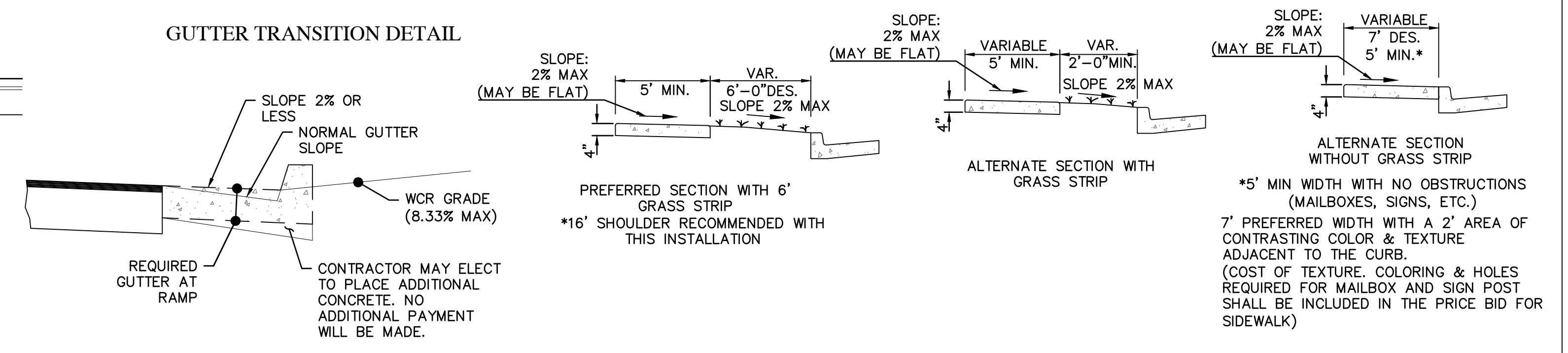
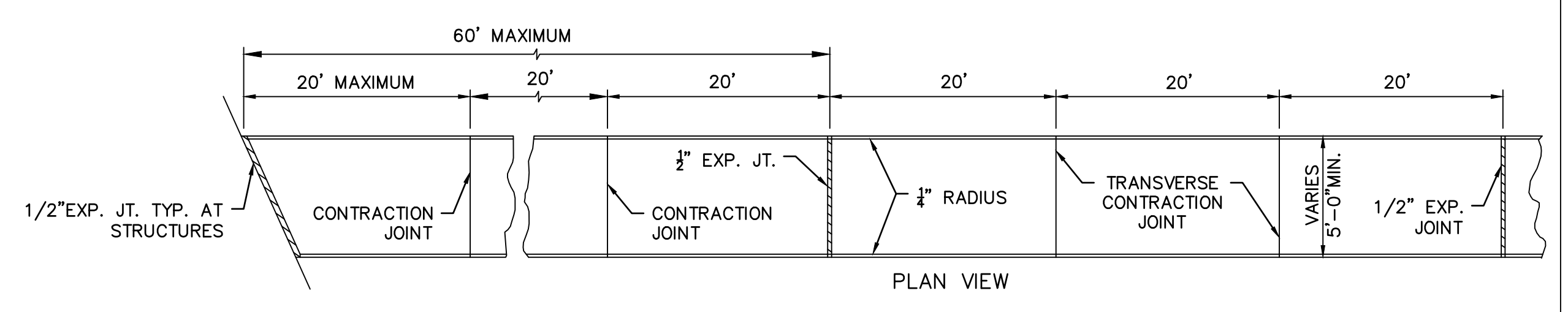
SHEET NAME: DETAILS  
REVISIONS:  
1.  
2.  
3.  
4.  
5.  
6.  
7.  
8.  
9.  
10.  
INITIAL DATE: 05/8/2026  
DRAWN BY: KRC  
CHECKED BY: TRL  
PROJECT #: 2025-177  
SHEET NUMBER: C5

TYPICAL LOCATIONS FOR CURB CUT RAMPS- PLAN VIEW

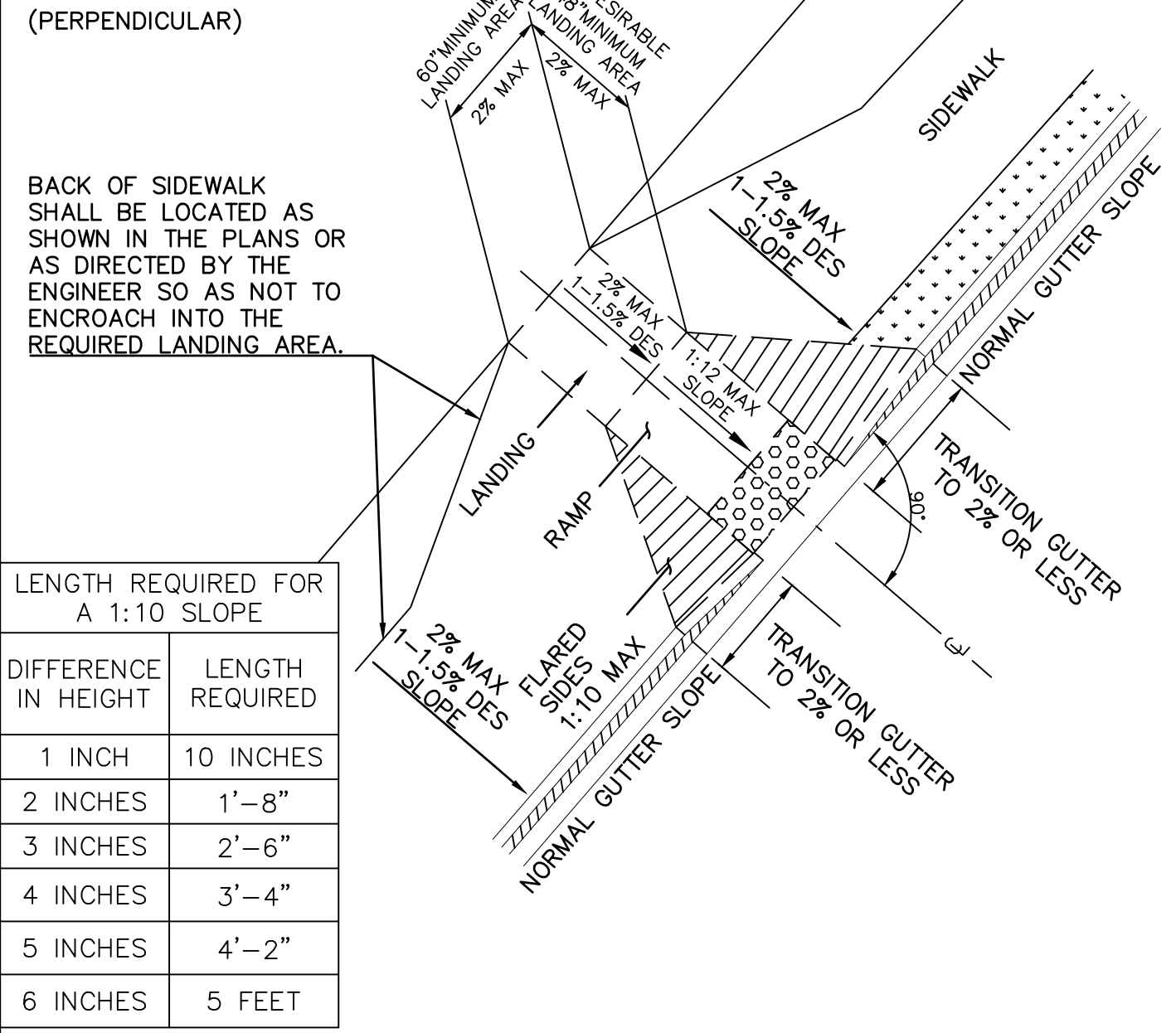


NOTE: THE RAMP LENGTH IS NOT REQUIRED TO EXCEED 15 FEET. THE RAMP SLOPE MAY EXCEED 12:1 IF THE SITE CONDITIONS PREVENT THE USE OF A RAMP 15 FEET LONG.

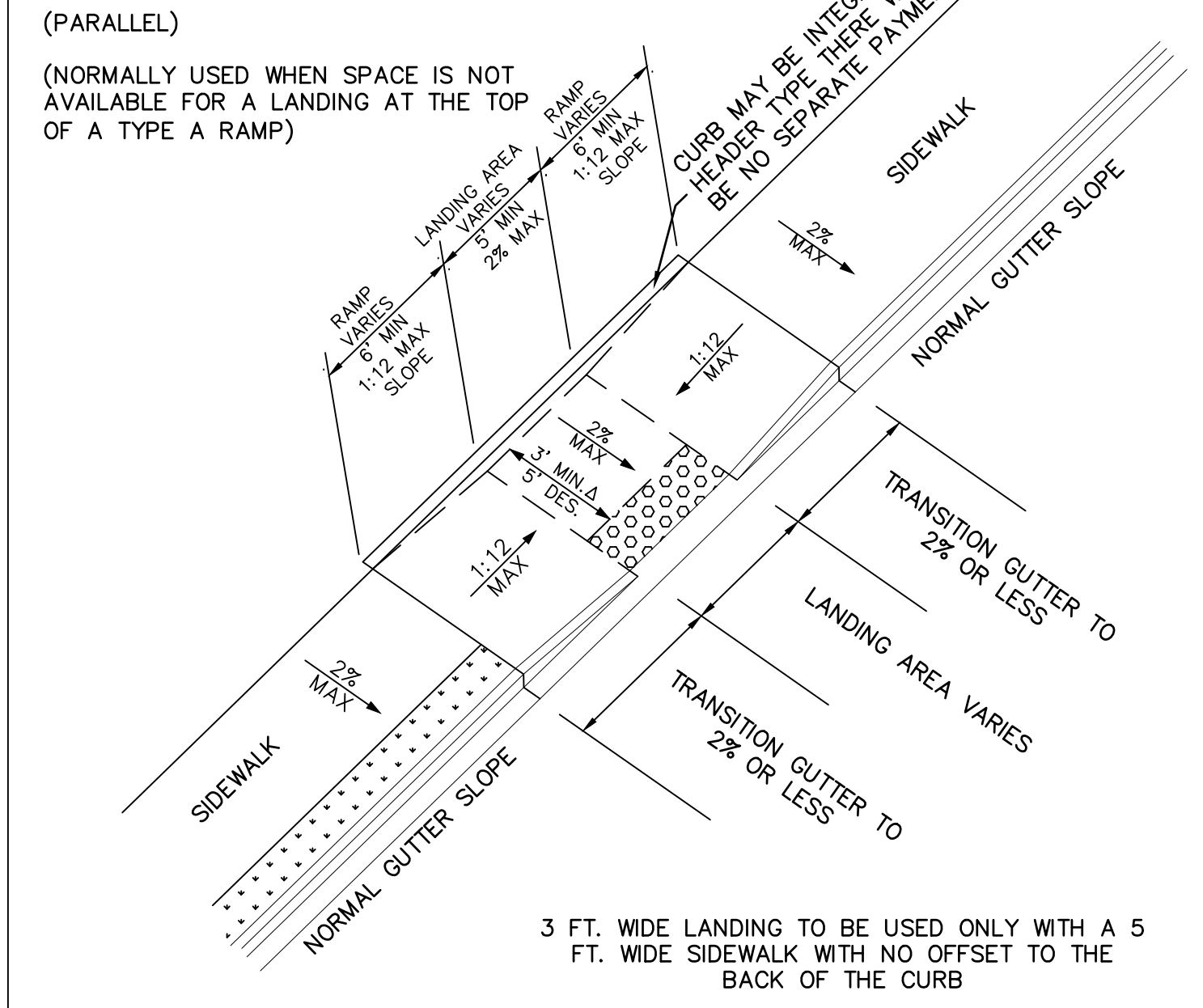
CONCRETE SIDEWALK DETAILS



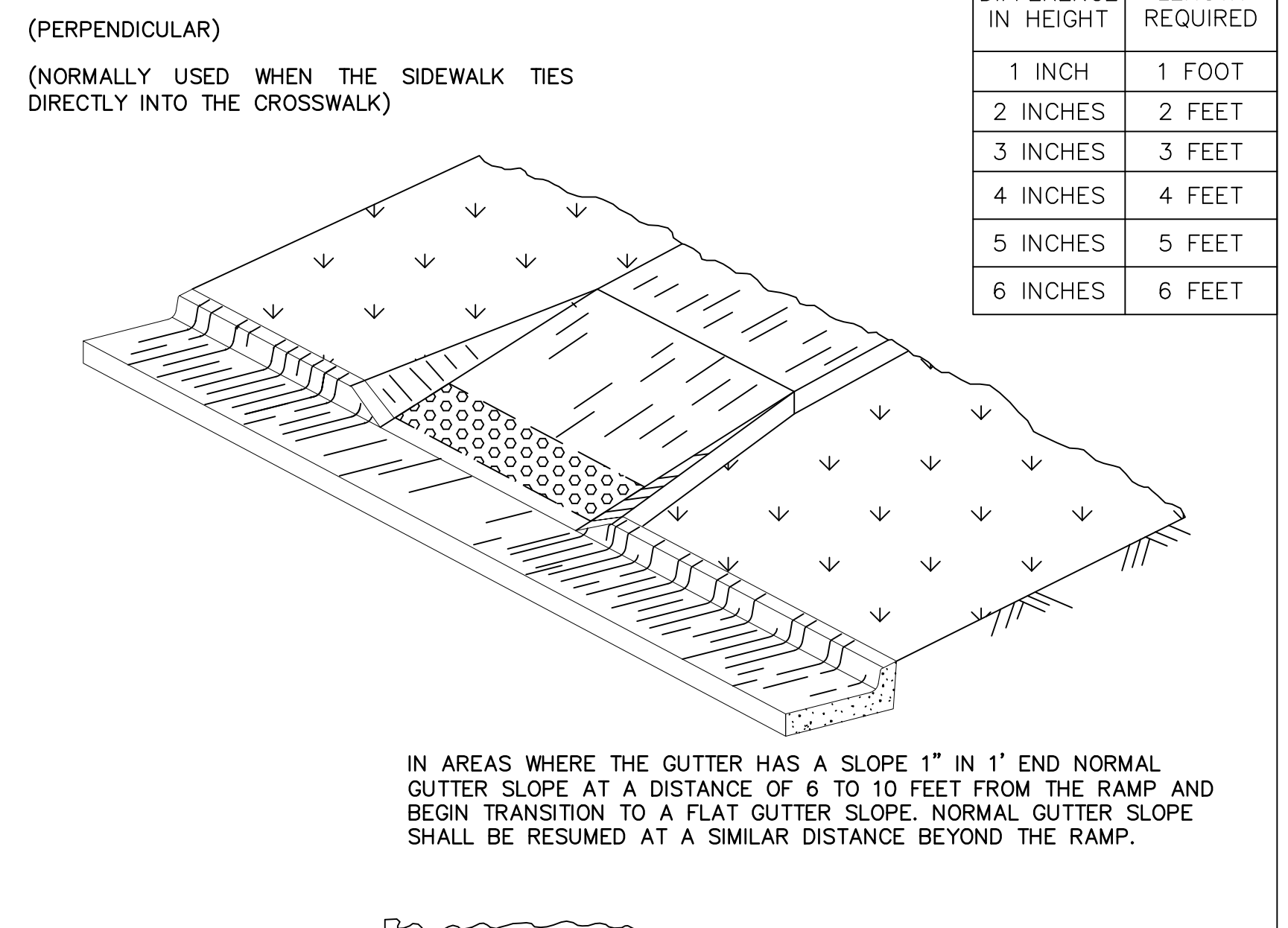
TYPE A (PERPENDICULAR)



TYPE B (PARALLEL)



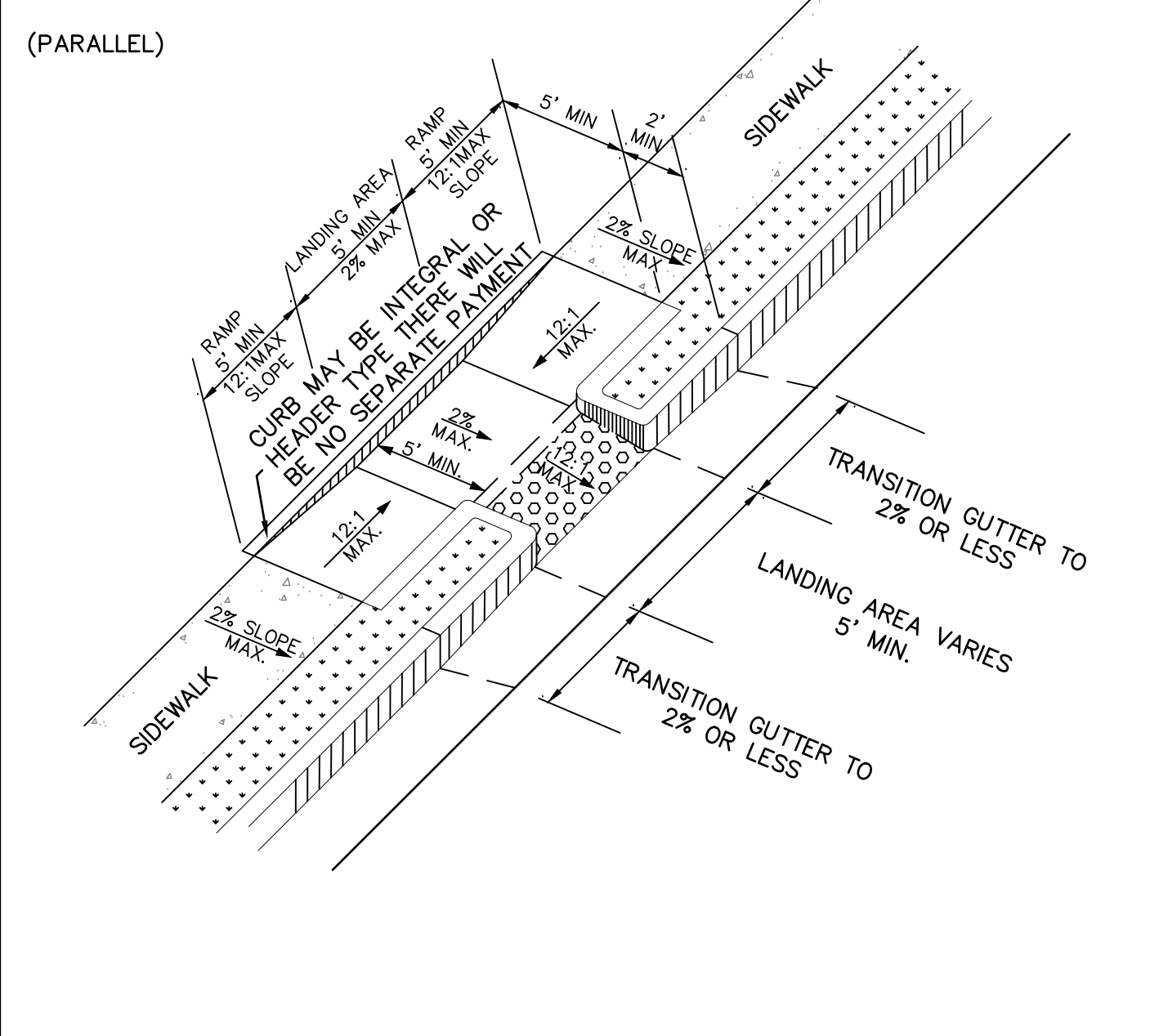
TYPE D (PERPENDICULAR)



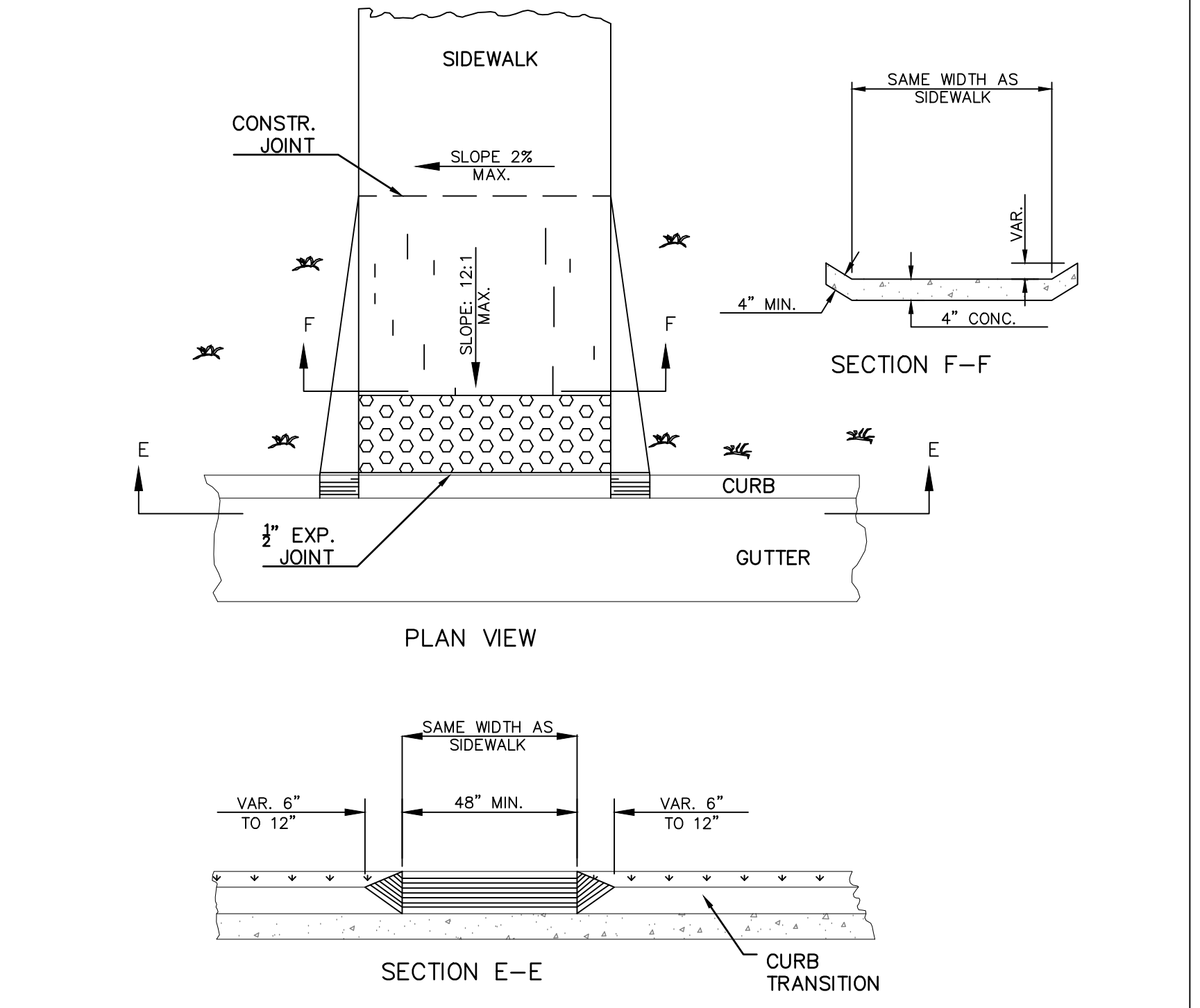
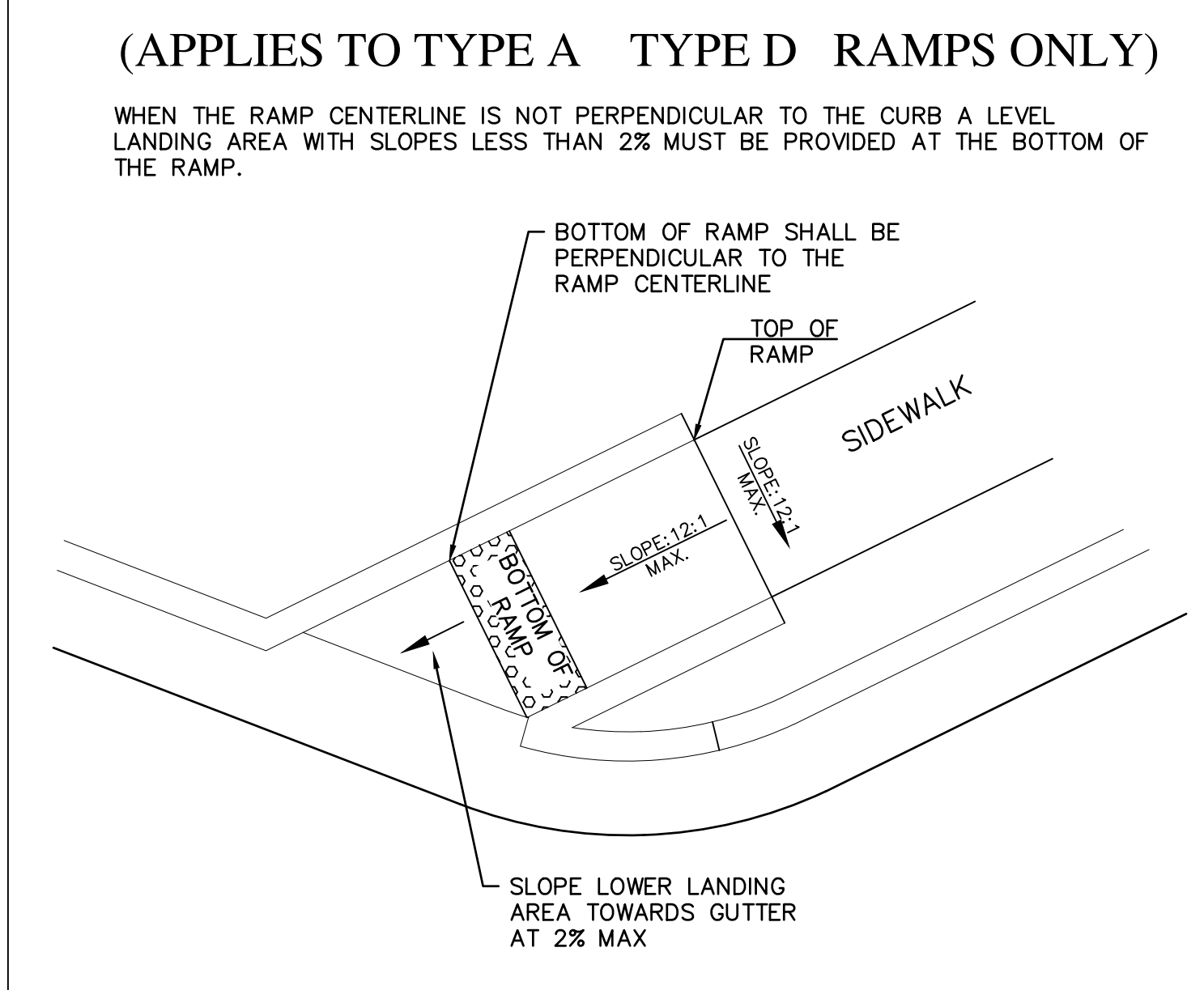
- NOTES FOR CONCRETE SIDEWALK:
- A. CONCRETE TO BE PLACED 4" THICK AND FINISHED WITH TAMPS, WOOD FLOATS AND STIFF-BRISTLE BROOMS.
  - B. TRANSVERSE CONTRACTION JOINTS SHALL BE PLACED AT 20 FT. INTERVALS. ALL EDGES TO BE ROUNDED TO 1/4" RADIUS.
  - C. 1/2" EXPANSION JOINTS SHALL BE PLACED, WHERE SIDEWALK TIE INTO A STRUCTURE OR TERMINATE AT CURB, RAMPS OR DRIVEWAYS AND AT 60' INTERVALS.

- NOTES FOR CURB CUT RAMPS:
1. CURB CUT RAMPS WILL BE LOCATED AS FOLLOWS UNLESS PLANS OR CONTRACT SPECIFY OTHERWISE.
    - a. AT ALL PEDESTRIAN CROSSWALKS WHERE CURB IS CONSTRUCTED OR REPLACED.
    - b. WHERE THE SIDEWALK, CONCRETE OR UNPAVED, IS INTERRUPTED BY THE CURB AT TURNOUTS OR AT INTERSECTIONS.
    - c. AT OTHER LOCATIONS SUCH AS HOSPITALS, NURSING HOMES, REST AREAS, ETC., WHERE THE CURB WOULD OTHERWISE BE AN OBSTRUCTION TO THE PHYSICALLY DISABLED.
  2. RAMPS WILL BE CONSTRUCTED FROM CONCRETE. SPECIFICATIONS FOR RAMPS WILL BE THE SAME AS FOR CONCRETE SIDEWALK. RAMPS SHALL HAVE EITHER A ROUGH OR A TEXTURED FINISH.
  3. DROP INLETS ARE NOT TO BE LOCATED DIRECTLY IN FRONT OF RAMPS. CATCH BASINS SHOULD BE LOCATED AT LEAST 10 FT. FROM RAMPS WHEN FEASIBLE.
  4. WHERE RAMPS ARE LOCATED IN RADI, THE DIMENSIONS SHOWN FOR RAMP WIDTHS AND TAPERS ARE MEASURED PERPENDICULAR TO THE RAMP AND NOT ALONG THE CURVE.
  5. WHERE UTILITY STRUCTURES CONFLICT, WHERE SIDEWALK GEOMETRY VARIES, AT SKEWED INTERSECTIONS, OR IN OTHER SPECIAL CASES, THE RAMP DESIGNS MAY BE MODIFIED BY THE DESIGNER OR ENGINEER, PROVIDED THAT THE WIDTH REMAINS A MINIMUM OF 48 INCHES, AND NO SLOPE ON THE ACCESSIBLE PART OF THE RAMP IS STEEPER THAN 12:1.
  6. LINEAR FEET OF CURB AND GUTTER WILL INCLUDE THE TRANSITIONED CURB IN FRONT OF RAMPS. SQ. YDS. OF CONCRETE SIDEWALK AND CONCRETE MEDIUM PAVING WILL INCLUDE RAMPS. NO ADDITIONAL PAYMENT WILL BE MADE FOR CURB RAMPS. NO ADDITIONAL PAYMENT WILL BE MADE FOR SAWING AND REMOVING EXISTING SIDEWALK OR CURB WHERE NECESSARY FOR RAMP CONSTRUCTION.
  7. WHEN A CURB RAMP IS PLACED ON EXISTING PAVEMENT. THE PAVEMENT SHALL BE REMOVED TO PROVIDE A MINIMUM THICKNESS OF 3 INCHES OF CONCRETE AT ALL LOCATIONS. NO SEPARATE PAYMENT WILL BE MADE FOR REMOVAL OF THE PAVEMENT.
  8. DETECTABLE WARNING SURFACES ARE REQUIRED ON ALL INTERSECTIONS WITH PUBLIC STREETS. SIGNALIZED COMMERCIAL DRIVEWAYS. AND COMMERCIAL DRIVEWAYS WITH AN AADT OF 25 VPD.

TYPE C (PARALLEL)



SKewed RAMP DETAILS (APPLIES TO TYPE A TYPE D RAMPS ONLY)



Drawing File: C:\active projects\2025-177 h - arlen oaks roadway improvements\90-drawings\DWG\CONST\2025-177.dwg  
Plotted Date: May 15, 2026 - 9:43am